

FLX Spot DVS

LED for Kitchen cabinet, Displays & Furniture

Super Slim LED Recessed Spotlight



- Linkable together with FLX series
- Single 4W diode eliminates multiple shadows
- Virtually no heat emission and no UV radiation
- Available in silver, gold, white, black
- To be used with constant voltage DC 24V driver
- Dimmable with available accessories

Various color

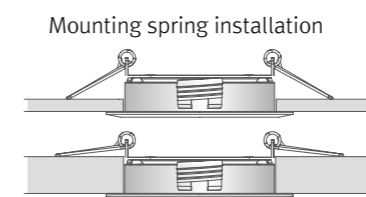
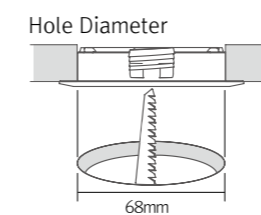
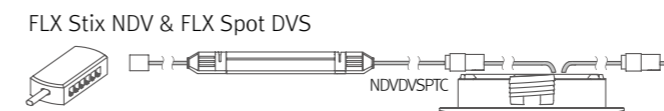
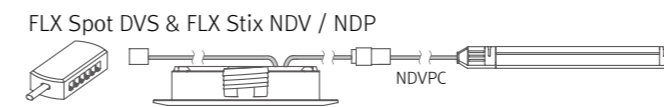
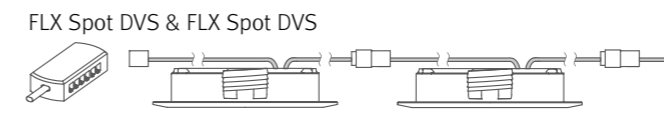




Various options



Installation



Max. connection of linked fixtures

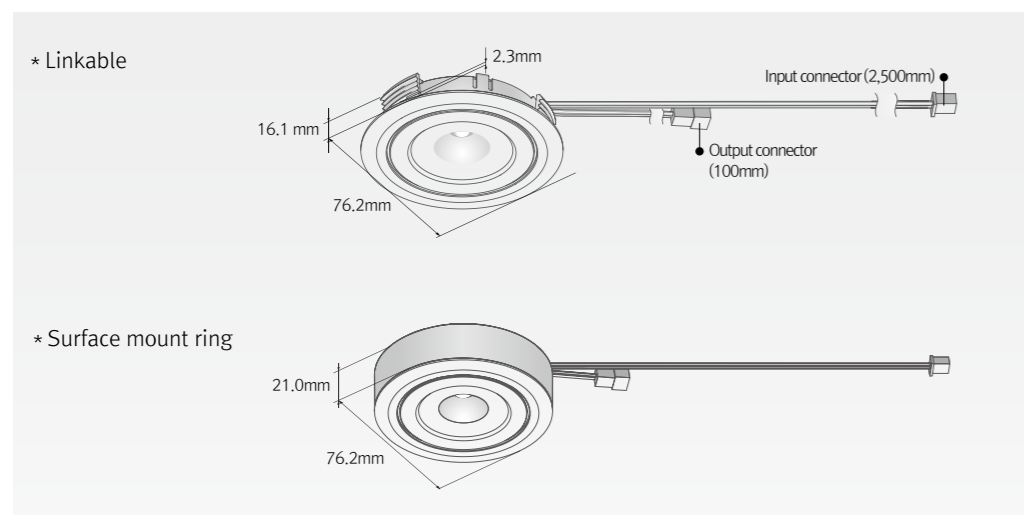
- FLX Spot DVS : Max 7pcs in a row
- LED Driver

Model Name	Max. units for LED driver			
	24V/15W	24V/30W	24V/75W	24V/200W
DVS4A 40K-24V	3	7	17	47

Specification

Model Name	Color	Power Input	Lamp Power	Luminous Flux	Efficiency	Color Rendering	Available Color	Beam Angle	Operating Temperature
DVS4A 40K-24V-WT-25	White	DC24V	4.3W	485lm	108lm/w	Ra > 85	2,700K/3,000K/3,500K/4,000K/5,700K	25°	0~45°C
DVS4A 40K-24V-WT-45	Black	DC24V	4.3W	500lm	109lm/w	Ra > 85	2,700K/3,000K/3,500K/4,000K/5,700K	45°	0~45°C
DVS4A 40K-24V-WT-60	Silver	DC24V	4.3W	485lm	105lm/w	Ra > 85	2,700K/3,000K/3,500K/4,000K/5,700K	60°	0~45°C
	Gold	DC24V	4.3W	485lm	105lm/w	Ra > 85	2,700K/3,000K/3,500K/4,000K/5,700K	60°	0~45°C

Dimension



Accessories

	<p>Ⓐ FLX Spot DVS</p> <table border="1"> <thead> <tr> <th>White</th> <th>Black</th> <th>Gold</th> <th>Silver</th> </tr> </thead> <tbody> <tr> <td>DVS4A 40K-24V-WT</td> <td>DVS4A 40K-24V-BK</td> <td>DVS4A 40K-24V-GD</td> <td>DVS4A 40K-24V-SV</td> </tr> </tbody> </table>	White	Black	Gold	Silver	DVS4A 40K-24V-WT	DVS4A 40K-24V-BK	DVS4A 40K-24V-GD	DVS4A 40K-24V-SV
White	Black	Gold	Silver						
DVS4A 40K-24V-WT	DVS4A 40K-24V-BK	DVS4A 40K-24V-GD	DVS4A 40K-24V-SV						
	<p>Ⓑ Extension cable : DVSPTC (2,500mm) Between FLX Spot DVS & FLX Spot DVS or 12 way distributor</p>								
	<p>Ⓒ Connecting cable : NDVDVSPCT (1,000mm) Between FLX Spot DVS & FLX Stix NDV * Available Color : Black, Gray</p>								
	<p>Ⓓ Connecting cable : NDVPC (2,500mm) Between FLX Stix NDV & FLX Spot DVS * Available Color : Black, Gray</p>								

Part No	FLC15-24V/T	FLC30-24V/T	FLC75-24V-P/T
Capacity	15W 24V	30W 24V	75W 24V



Ⓔ LED Driver : FLC200-24V/T (200W DC24V)
LED Driver With 12way distributor



Ⓕ Dimming Interface (1-10V) : FDC-L10
Max. 100W (100W/CH, 1CH)



Ⓖ Dimming Interface(0-10/1-10,DMX512)
FDA-L2M0 : Max. 200W (100W/CH, 2CH)
FDA-L5M : Max. 200W (50W/CH, 5CH)



Ⓗ Dimming Interface (Dai): FDD-L1DA
Max. 200W (100W/CH, 1CH)



Ⓙ Mounting spring: DVS spring



White	Black	Gold	Silver
DVS MR-WT	DVS MR-BK	DVS MR-GD	DVS MR-SV



White	Black	Gold	Silver
DVS DR-WT	DVS DR-BK	DVS DR-GD	DVS DR-SV



Ⓜ Door and motion detection sensor (DC) : FLS-M24V
Voltage : DC 24V



Ⓝ Human-body detection sensor (DC) : FLS-P24V
Voltage : DC 24V



FLX Spot DVS Swivel

LED for Kitchen cabinet, Displays & Furniture

Super Slim Swivel LED Spotlight



- Linkable together with FLX series
- Single 4W diode eliminates multiple shadows
- Virtually no heat emission and no UV radiation
- Available in silver, bronze, white, black
- To be used with constant voltage DC 24V driver
- Dimmable with available accessories

Various color





Specification

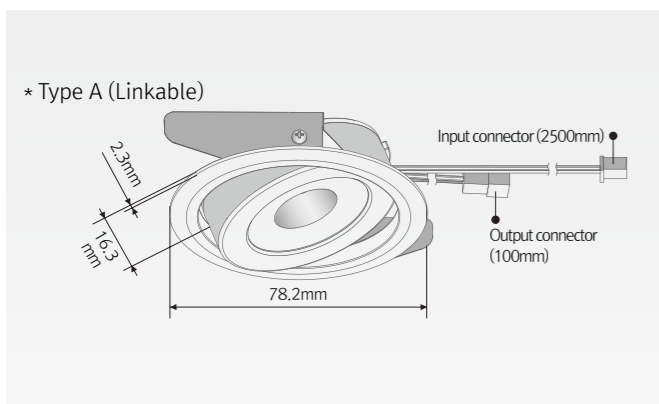
Model Name	Color	Power Input	Lamp Power	Luminous Flux	Efficiency	Color Rendering	Available Color	Beam Angle	Operating Temperature
DVS4A 40K-24V-SW-WT-25	White	DC24V	4.3W	485lm	108lm/w	Ra > 85	2,700K/3,000K/3,500K/4,000K/5,700K	25°	0-45°C
DVS4A 40K-24V-SW-WT-45	Black	DC24V	4.3W	500lm	109lm/w	Ra > 85	2,700K/3,000K/3,500K/4,000K/5,700K	45°	0-45°C
DVS4A 40K-24V-SW-WT-60	Silver	DC24V	4.3W	485lm	105lm/w	Ra > 85	2,700K/3,000K/3,500K/4,000K/5,700K	60°	0-45°C
	Gold	DC24V	4.3W	485lm	105lm/w	Ra > 85	2,700K/3,000K/3,500K/4,000K/5,700K	60°	0-45°C

Max. connection

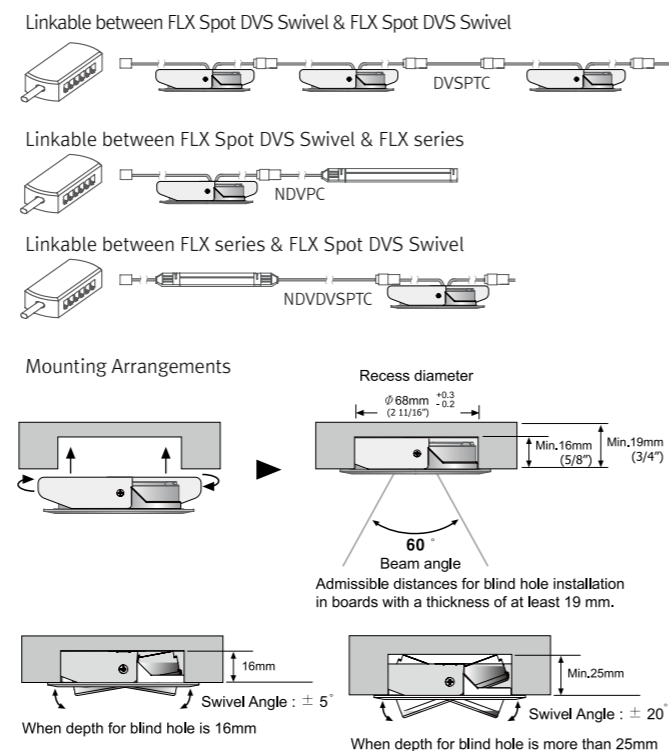
- FLX Spot DVS Swivel : Max 7pcs in a row
- LED Driver

Model Name	Max. units for LED driver			
	24V/15W	24V/30W	24V/75W	24V/200W
DVS4A 40K-24V-SW	3	7	17	47

Dimension



Installation

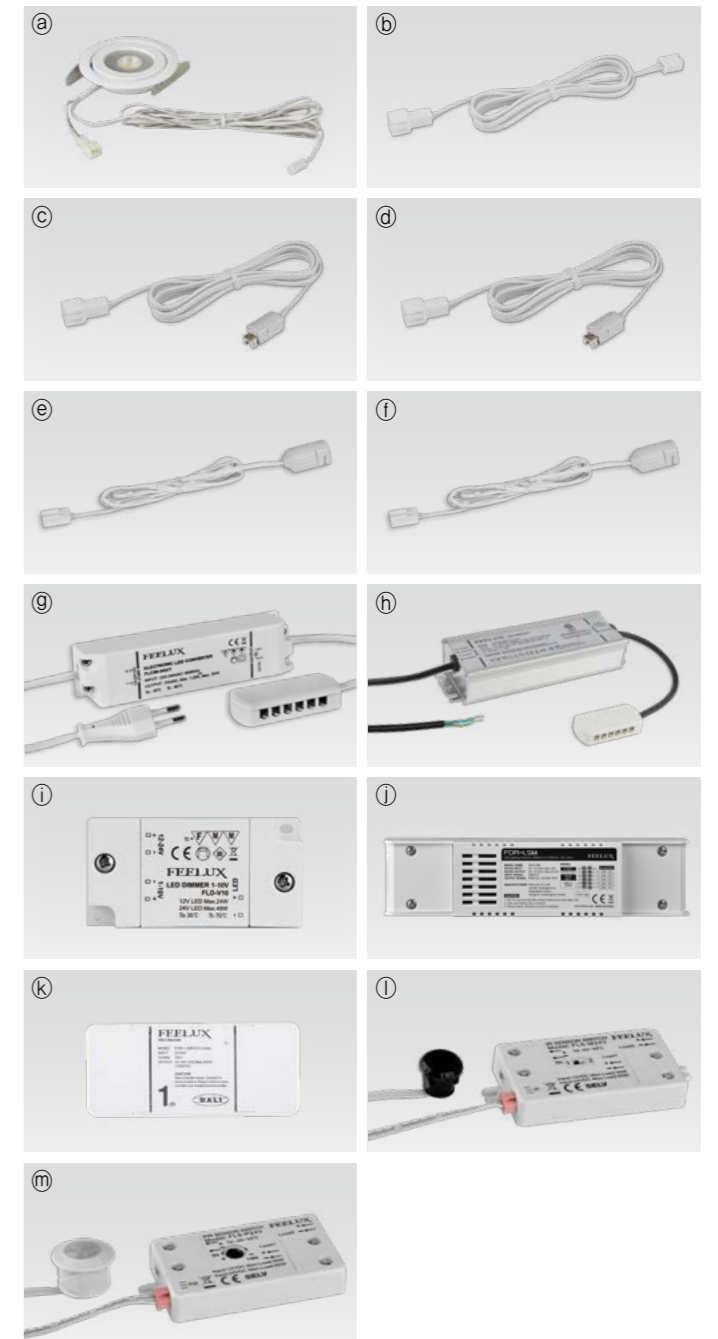


Various options



Accessories

- a) FLX Spot DVS Swivel**
White | Black | Bronze | Silver
DVS4A 40K-24V-SW-WT | DVS4A 40K-24V-SW-BK | DVS4A 40K-24V-SW-BZ | DVS4A 40K-24V-SW-SV
- b) Extension cable : DVSPTC (2,500mm)**
Between FLX Spot Swivel & FLX Spot DVS or 12 way distributor
- c) Connecting cable : NDVDVSPTC (1,000mm)**
Between FLX Spot DVS Swivel & FLX Stix NDV
* Available Color : Black, Gray
- d) Connecting cable : NDPDVSPTC (1,000mm)**
Between FLX Spot DVS Swivel & FLX Stix NDP
* Available Color : Black, Gray
- e) Connecting cable : NDVPC (2,500mm)**
Between FLX Stix NDV & FLX Spot DVS Swivel
- f) Connecting cable : NDPPC (2,500mm)**
Between FLX Stix NDP & FLX Spot DVS Swivel



FLX Stix DDPPro

LED for Display, Cabinet, Furniture & Cove

Dynamic LED



- Super slim linear LED with spot free high output
- Quick connection system
- Perfected with color consistency
- No dark spot at the linkage point for continuous seamless effect
- Various mounting methods including magnetic
- Dimmable with available accessories





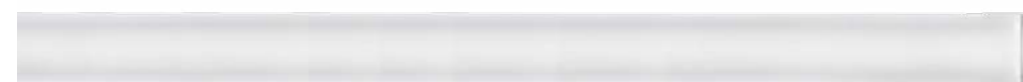
FLX Stix DDPPro
High Output Dynamic LED



FLX Stix DDPPro 3W Length (145 mm)



FLX Stix DDPPro 6W Length (285.1 mm)



FLX Stix DDPPro 12W Length (564.6 mm)

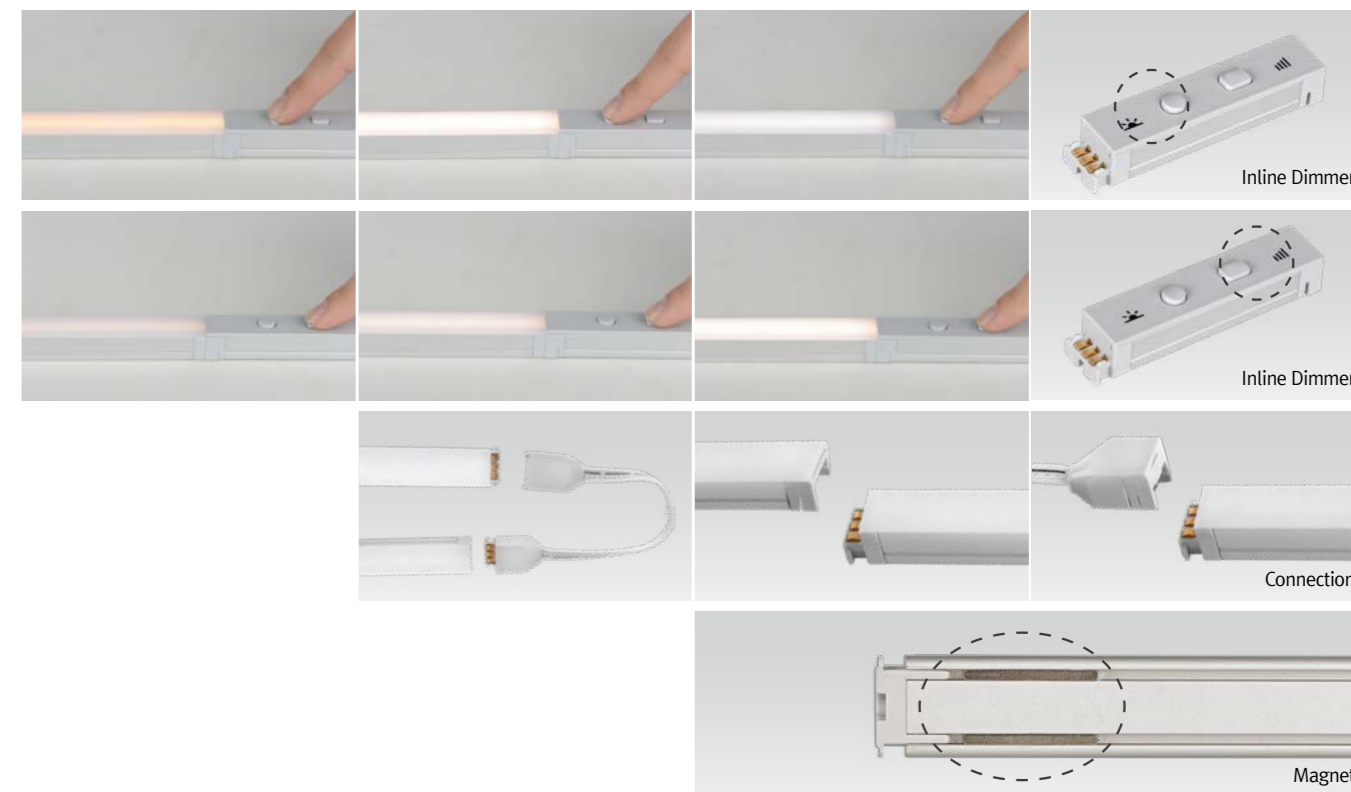


FLX Stix DDPPro 18W Length (843.6 mm)

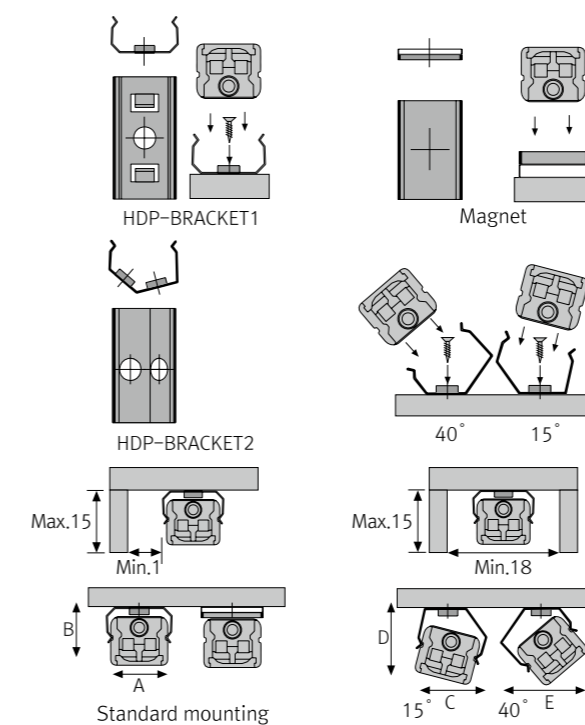


FLX Stix DDPPro 24W Length (1,122.7 mm)

Various options



Installation



Max. connection

- 75W in one row(single power feed)
- LED Driver

LED Driver Model Name	Max. units for LED Driver			
	24V/15W	24V/30W	24V/75W	24V/200W
DDP3 SC-24V-C90	5	10	25	71
DDP6 SC-24V-C90	2	5	12	34
DDP12 SC-24V-C90	1	2	6	17
DDP18 SC-24V-C90	-	1	4	11
DDP24 SC-24V-C90	-	1	4	8

- W/ Bracket

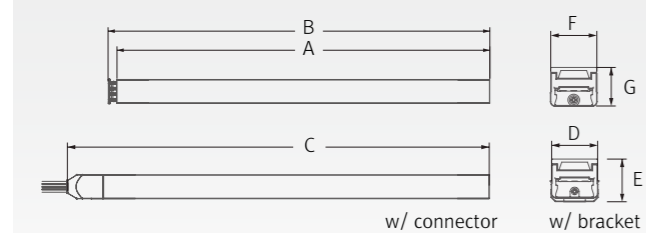
	A(mm)	B(mm)	C(mm)	D(mm)	E(mm)	F(mm)
Flat type	16	14	18.3	18	21	19.6

Specification

Model Name	Power Input	Lamp Power	Luminous Flux	Efficiency	Color Rendering	Available Color	Operating Temperature
DDP3 SC-24V-C90	DC24V	3W	240 lm	80 lm/W	Ra > 90	2,200K-4,000K	0-45°C
DDP6 SC-24V-C90	DC24V	6W	480 lm	80 lm/W	Ra > 90	2,200K-4,000K	0-45°C
DDP12 SC-24V-C90	DC24V	12W	960 lm	80 lm/W	Ra > 90	2,200K-4,000K	0-45°C
DDP18 SC-24V-C90	DC24V	18W	1,440 lm	80 lm/W	Ra > 90	2,200K-4,000K	0-45°C
DDP24 SC-24V-C90	DC24V	24W	1,920 lm	80 lm/W	Ra > 90	2,200K-4,000K	0-45°C

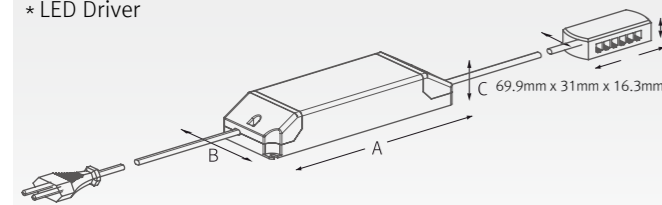
Dimension

Model Name	Power Input (V)	Lamp Power (W)	A (mm)	B (mm)	C (mm)	D (mm)	E (mm)	F (mm)	G (mm)
DDP3SC-24V-C90	DC 24	3	139.9	145	162.8	16	15.3	15	14.1
DDP6SC-24V-C90	DC24	6	280	285.1	302.9	16	15.3	15	14.1
DDP12SC-24V-C90	DC 24	12	559.5	564.6	582.4	16	15.3	15	14.1
DDP18SC-24V-C90	DC 24	18	838.5	843.6	861.4	16	15.3	15	14.1
DDP24SC-24V-C90	DC 24	24	1,111.6	1,122.7	1,140.5	16	15.3	15	14.1

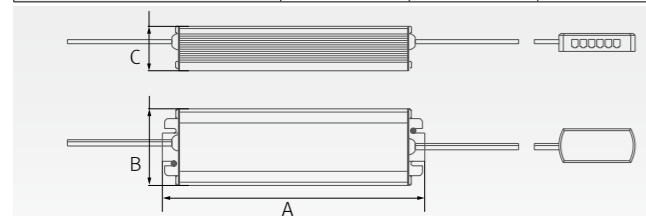


Model Name	A (mm)	B (mm)	C (mm)
FLC15-24V/T	121	45	16
FLC30-24V/T	150	41	31
FLC75-24V-P/T	180	60	32

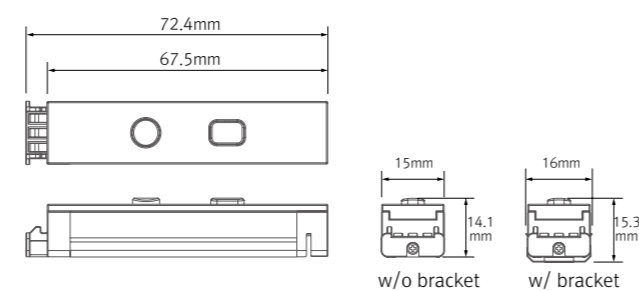
*** LED Driver**



Model Name	A (mm)	B (mm)	C (mm)
FLC200-24V/T	228	68	39



*** Inline dimmer**

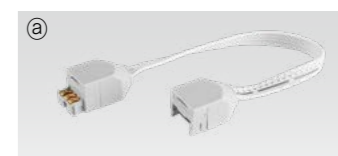


Accessories

Ⓐ Connecting cables(between FLX Stix HDPro & FLX Stix HDPro)

HDPPTC	HDPPTC1	HDPPTC2	HDPPTC4	HDPPTC6
150mm(6inch)	300mm(1feet)	600mm(2feet)	1,200mm(4feet)	1,800mm(6feet)

* Available Color : Black, Gray



Ⓑ Power cable : HDPPC (2,500mm)

Power cable (Between FLX Stix HDP/DDP & 12-way distributor)

* Available Color : Black, Gray



Ⓒ Mounting bracket : HDP-BRACKET 1

HDP-BRACKET1(A) : 1set = 2pcs
HDP-BRACKET1(B) : 1set = 3pcs



Ⓓ Angle bracket (15° & 40°) : HDP-BRACKET 2

HDP-BRACKET2(A) : 1set = 2pcs
HDP-BRACKET2(B) : 1set = 3pcs



Ⓔ Sidefeed for seamless extension (3W) : DDP3 SC-24V-C90-S



Ⓕ End cap : HDP-CAP



Ⓖ LED Driver with 12way distributor, with power cord (1,800mm)

Part No	FLC15-24V/T	FLC30-24V/T	FLC75-24V-P/T
Capacity	15W 24V	30W 24V	75W 24V



Ⓗ LED Driver : FLC200-24V/T (200W, DC24V)

LED Driver With 12way distributor



Ⓘ Dimming Interface(0-10/1-10, DMX512)

FDA-L2M0 : Max. 200W (100W/CH, 2CH)
FDA-L5M : Max. 200W (50W/CH, 5CH)



Ⓛ Dimming Interface (Dali): FDD-L1 DA

Max. 200W (100W/feed, 2feeds)



Ⓚ Inline dimmer : DDPDIM

Max 75W in a row

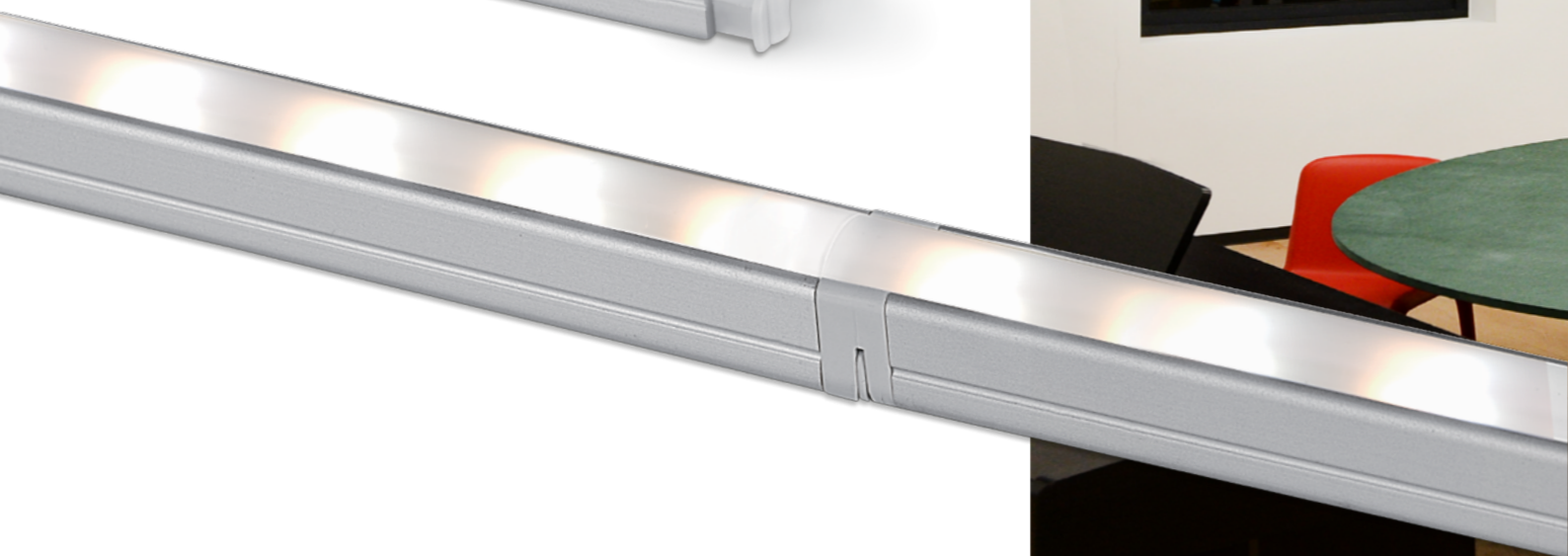
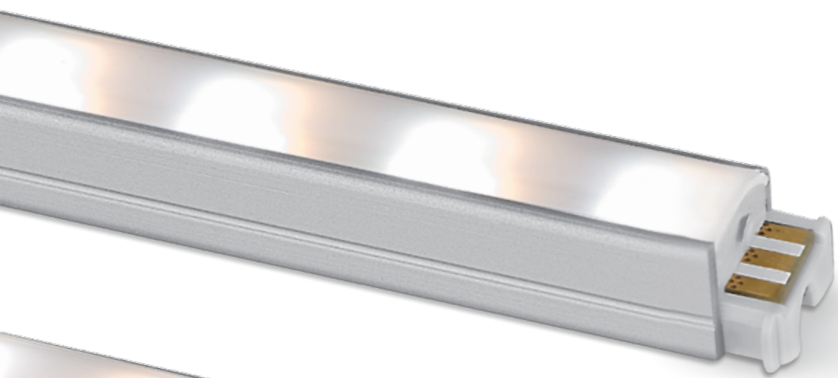


FLX Stix DDV*LED for Display, Cabinet, Furniture & Cove*

Dynamic LED

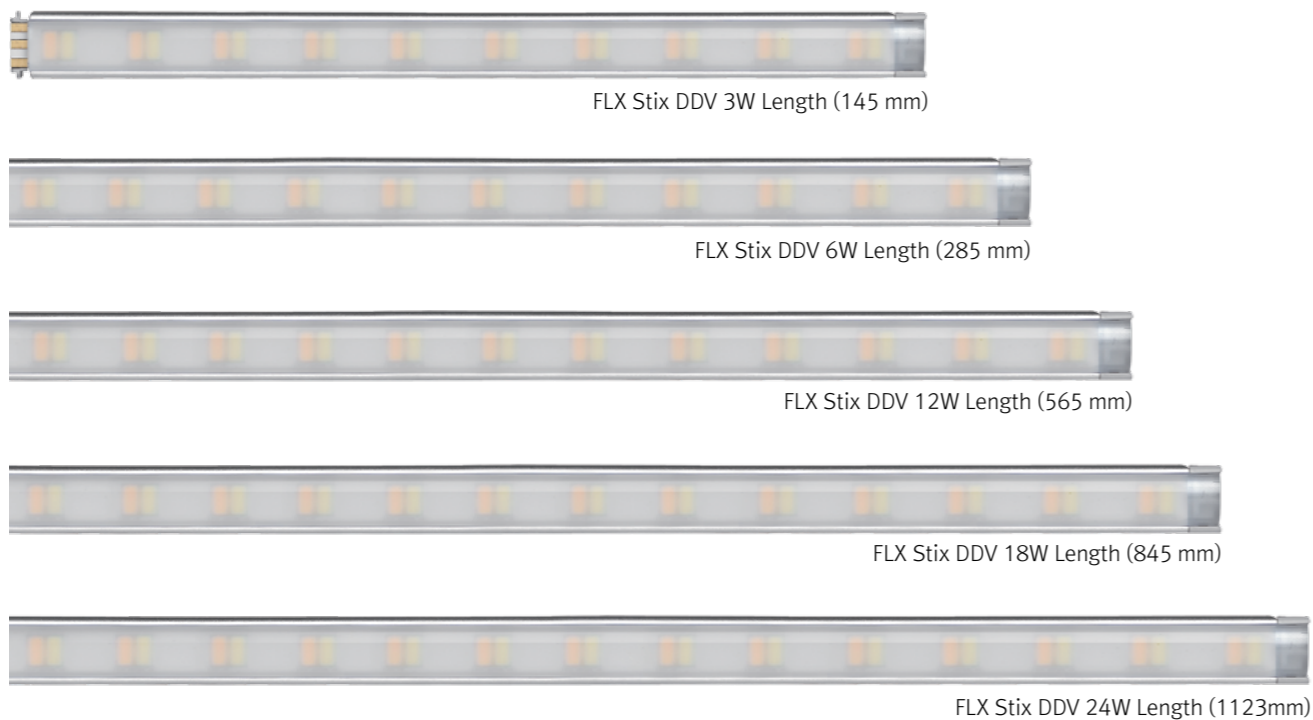


- Super Slim linear LED with white color changing output
- Quick connection system between fixtures
- Many lengths available
- Various mounting methods including magnetic
- To be used with constant voltage DC 24V driver
- Dimmable with available accessories

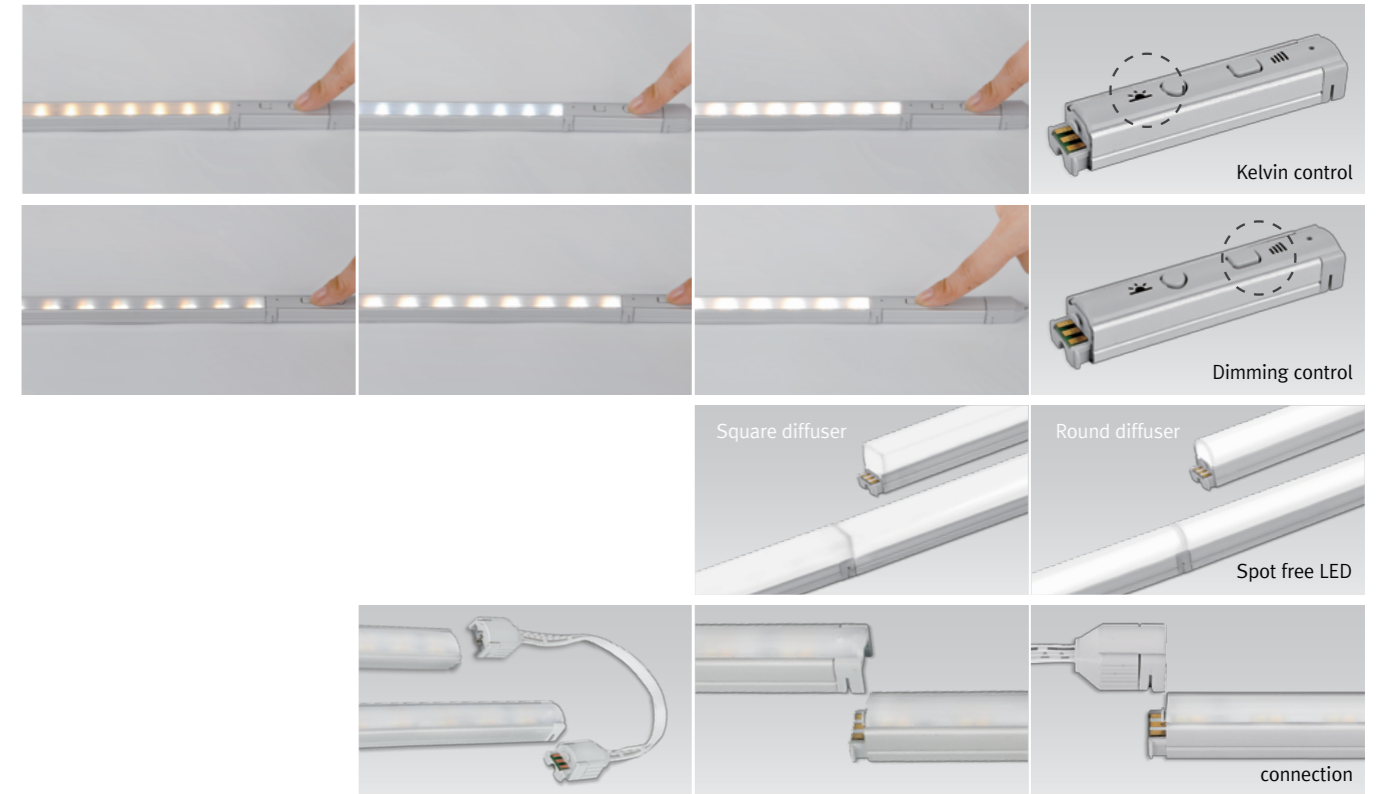




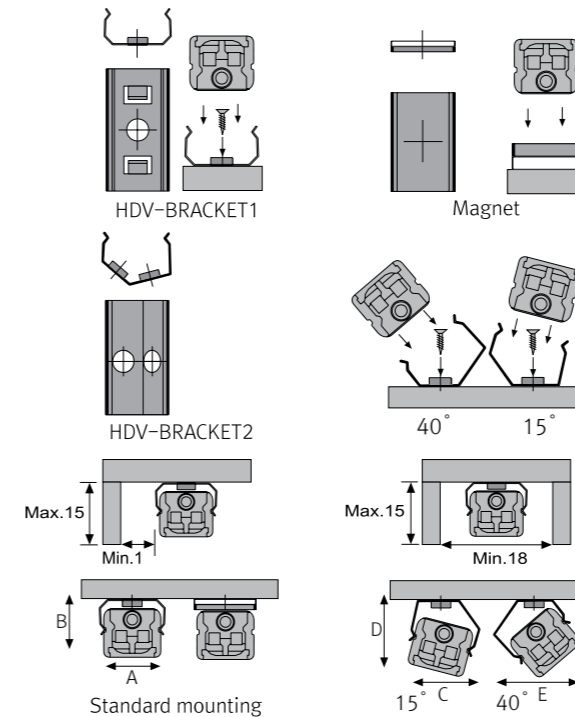
FLX Stix DDV
Dynamic LED



Various options



Installation



Max. connection

- FLX Stix DDV : 75W in one row (single power feed)
- LED Driver

Model Name	Max. units for LED Driver			
	24V/15W	24V/30W	24V/75W	24V/200W
DDV3 WC-24V	5	10	25	66
DDV6 WC-24V	2	5	12	33
DDV12 WC-24V	1	2	6	16
DDV18 WC-24V	-	1	4	11
DDV24 WC-24V	-	1	3	8

- W/ Bracket

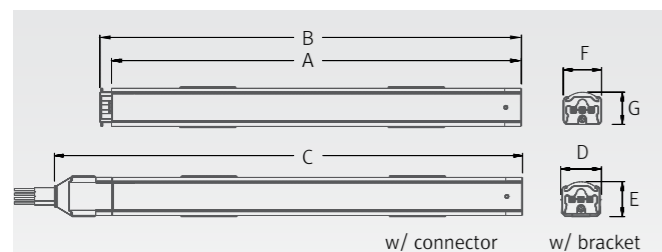
	A(mm)	B(mm)	C(mm)	D(mm)	E(mm)	F(mm)
Flat type	16.8	14.2	17.5	16.5	19.1	17.5
Round type	16.8	22.1	18.8	24.4	23.4	22.9
Square type	16.8	22.6	21.3	26.2	25.7	25.7

Specification

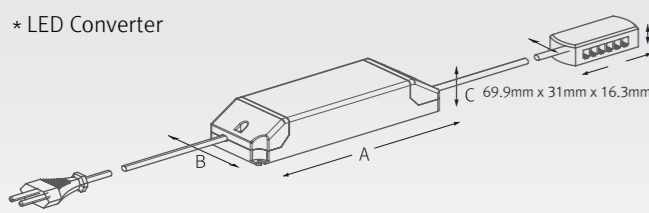
Model Name	Power Input	Lamp Power	Luminous Flux	Efficiency	Color Rendering	Available Color	Operating Temperature
DDV3 WC-24V	DC24V	3W	255lm	85 lm/W	Ra > 85	2,700K-6,000K	0-45°C
DDV6 WC-24V	DC24V	6W	510lm	85 lm/W	Ra > 85	2,700K-6,000K	0-45°C
DDV12 WC-24V	DC24V	12W	1,020lm	85 lm/W	Ra > 85	2,700K-6,000K	0-45°C
DDV18 WC-24V	DC24V	18W	1,530lm	85 lm/W	Ra > 85	2,700K-6,000K	0-45°C
DDV24 WC-24V	DC24V	24W	2,040lm	85 lm/W	Ra > 85	2,700K-6,000K	0-45°C

Dimension

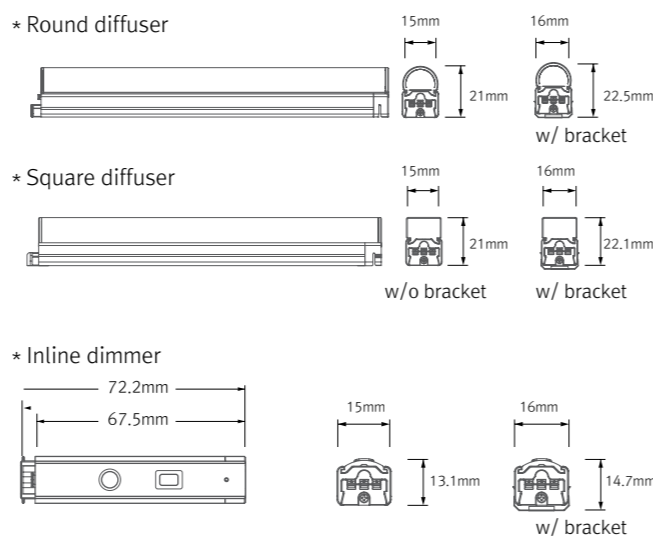
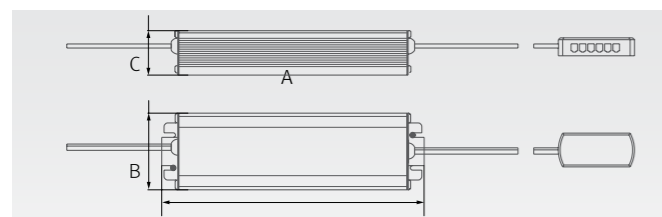
Model Name	Power Input (V)	Lamp Power (W)	A (mm)	B (mm)	C (mm)	D (mm)	E (mm)	F (mm)	G (mm)
DDV3 WC-24V	DC 24	2.9	140	145	162	16	14	15	12.5
DDV6 WC-24V	DC24	5.8	280	285	302	16	14	15	12.5
DDV12 WC-24V	DC 24	11.6	560	565	582	16	14	15	12.5
DDV18 WC-24V	DC 24	17.4	840	845	862	16	14	15	12.5
DDV24 WC-24V	DC 24	23.2	1,118	1,123	1,140	16	14	15	12.5



Model Name	A (mm)	B (mm)	C (mm)
FLC15-24V/T	121	45	16
FLC30-24V/T	150	41	31
FLC75-24V/T	180	60	32



Model Name	A (mm)	B (mm)	C (mm)
FLC200-24V/T	228	68	39



Accessories

Ⓐ Connecting cables (Between FLX Stix DDV & FLX Stix DDV)
 HDVPTC | HDVPTC1 | HDVPTC2 | HDVPTC4 | HDVPTC6
 150mm(6inch) | 300mm(1feet) | 600mm(2feet) | 1200mm(4feet) | 1800mm(6feet)

Ⓑ Power cable : HDVPC
 Power cable 2500mm (Between FLX Stix DDV & 6-way distributor)

Ⓒ Mounting bracket : HDV-BRACKET1
 Included in fixture
 HDV-BRACKET1(A) : 1set = 2pcs
 HDV-BRACKET1(B) : 1set = 3pcs

Ⓓ Angle bracket (15° & 40°) : HDV-BRACKET2
 HDV-BRACKET2(A) : 1set = 2pcs
 HDV-BRACKET2(B) : 1set = 3pcs

Ⓔ Sidefeed for seamless extension (3W) : DDV3 WC-24V-S
 The dimension is the same as DDV3 WC-24V
 Powered only through cable, no power supply on the input connector

Ⓛ End cap : HDV - CAP
 Included in fixture

Ⓜ LED Driver with 12way distributor, with power cord(1800mm)

Part No	FLC15-24V/T	FLC30-24V/T	FLC75-24V/T
Capacity	15W 24V	30W 24V	75W 24V

Ⓨ LED Driver : FLC200-24V/T (200W 24V)
 LED Driver With 12way distributor

Ⓩ Dimming Interface (1-10V) : FDC-L10
 Max. 100W (100W/CH, 1CH)

ⓐ Dimming Interface(0-10/1-10,DMX512)
 FDA-L2M0 : Max. 200W (100W/CH, 2CH)
 FDA-L5M : Max. 200W (100W/CH, 5CH)

ⓑ Inline dimmer : DDVDIM
 Max 75W in a row

ⓓ Wireless dimmer (RF) : FRWDIM
 Voltage : Battery type DC3V

Ⓞ Wireless receiver (RF) : FRW-L4M
 Max. 480W (120W/CH, 4CH)

Ⓟ Round diffuser

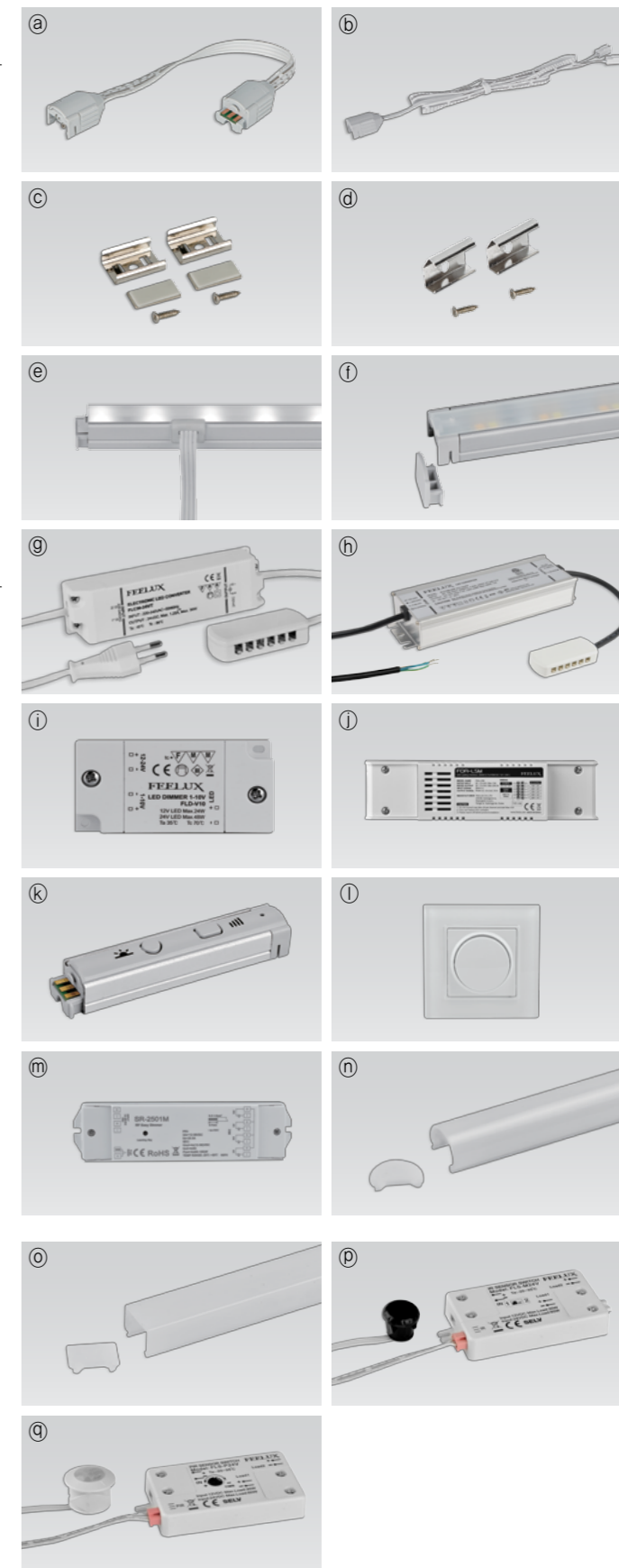
HDV3CVRM	HDV6CVRM	HDV12CVRM	HDV18CVRM	HDV24CVRM
3W	6W	12W	18W	24W

Ⓠ Square diffuser

HDV3CVSM	HDV6CVSM	HDV12CVSM	HDV18CVSM	HDV24CVSM
3W	6W	12W	18W	24W

Ⓡ Door and motion detection sensor : FLS-M24V
 Voltage : DC 24V

Ⓢ Human-body detection sensor : FLS-P24V
 Voltage : DC 24V

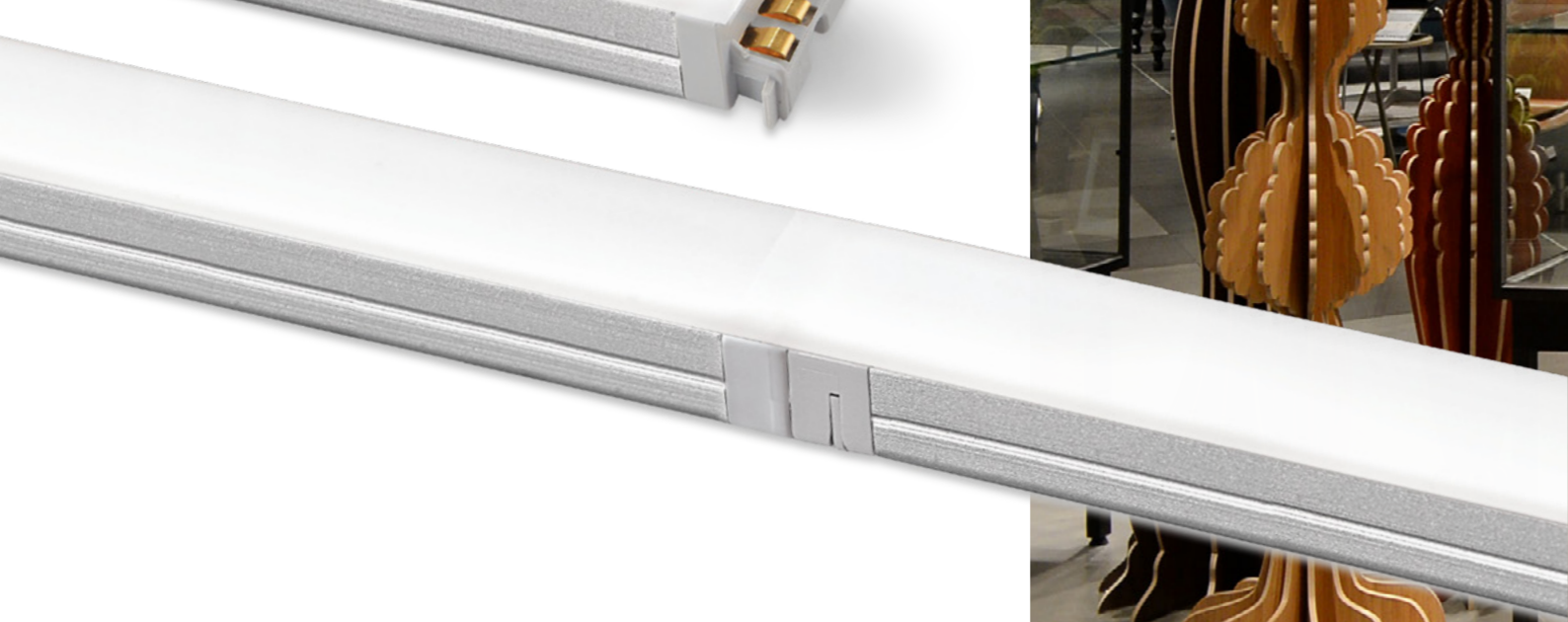


FLX Stix HDPPro*LED for Display, Cabinet, Furniture & Cove*

Linear perfection with high output HDPPro



- Super Slim linear LED with spot free high output
- Quick connection system
- Perfected with color consistency
- No dark spot at the linkage point for continuous seamless effect
- Various mounting methods including magnetic
- Dimmable with available accessories





FLX Stix HDPro
High Output



FLX Stix HDPro 3W Length (145 mm)



FLX Stix HDPro 6W Length (285.1 mm)



FLX Stix HDPro 12W Length (564.6 mm)

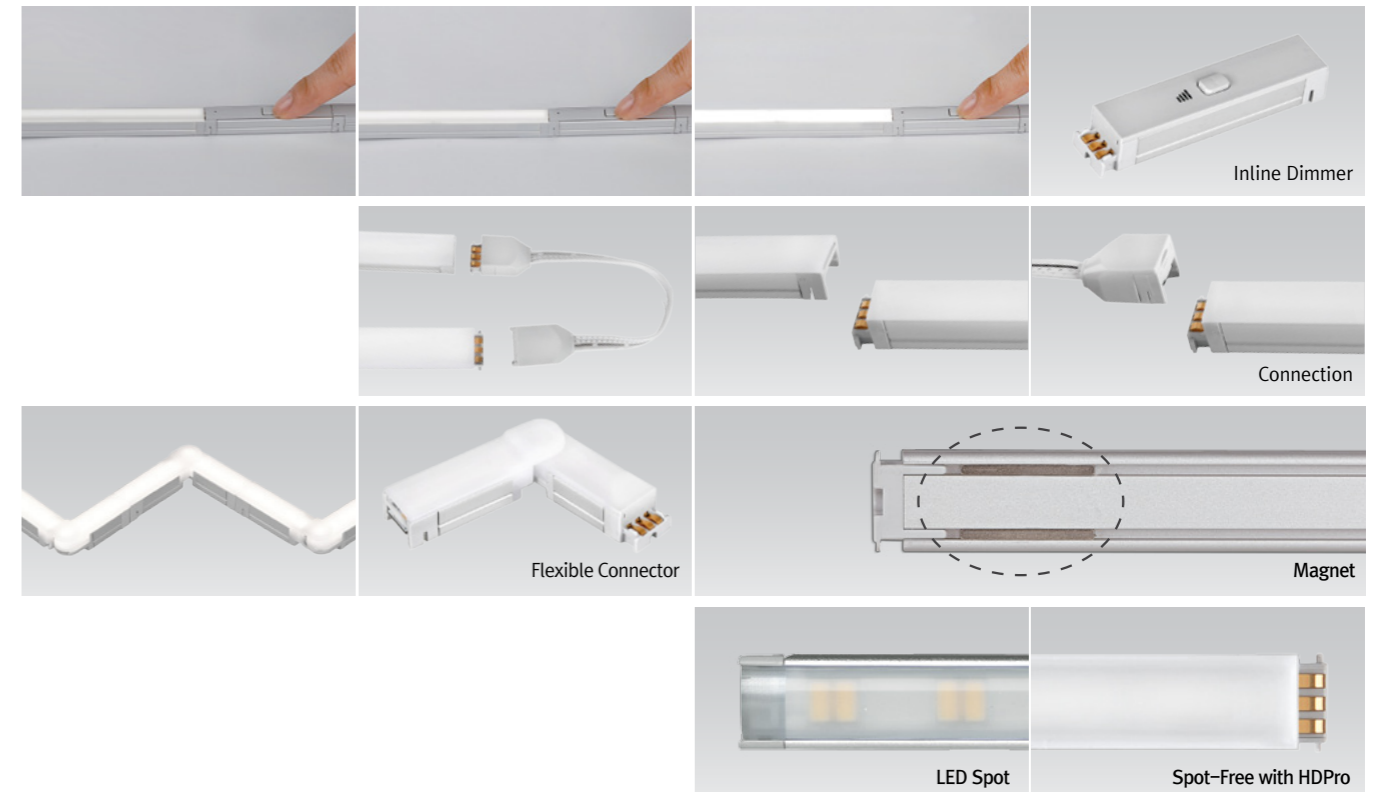


FLX Stix HDPro 18W Length (843.6 mm)

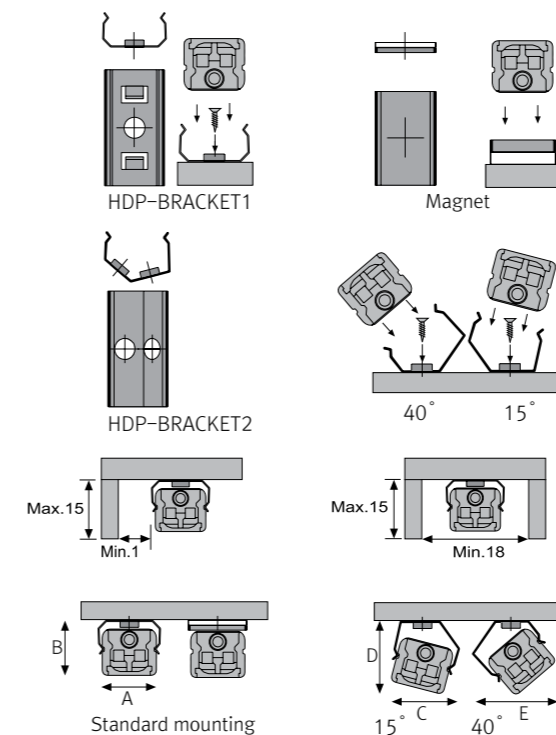


FLX Stix HDPro 24W Length (1122.7 mm)

Various options



Installation



Max. connection

- 75W in one row(single power feed)
- LED Driver

Model Name	Max. units for LED Driver			
	24V/15W	24V/30W	24V/75W	24V/200W
HDP3 40K-24V-C90	5	10	25	71
HDP6 40K-24V-C90	2	5	12	34
HDP12 40K-24V-C90	1	2	6	17
HDP18 40K-24V-C90	-	1	4	11
HDP24 40K-24V-C90	-	1	4	8

- W/ Bracket

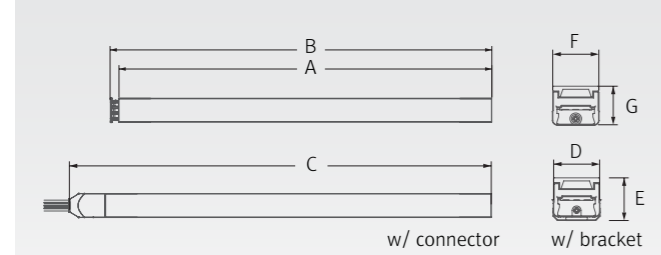
	A(mm)	B(mm)	C(mm)	D(mm)	E(mm)	F(mm)
Flat type	16	14	18.3	18	21	19.6

Specification

Model Name	Power Input	Lamp Power	Luminous Flux	Efficiency	Color Rendering	Available Color	Operating Temperature
HDP3 40K-24V-C90	DC24V	3W	240 lm	80 lm/W	Ra > 90	2,200K/2,500K/2,700K/3,000K/3,500K/4,000K/ 5,000K/5,700K	0~45°C
HDP6 40K-24V-C90	DC24V	6W	480 lm	80 lm/W	Ra > 90	2,200K/2,500K/2,700K/3,000K/3,500K/4,000K/ 5,000K/5,700K	0~45°C
HDP12 40K-24V-C90	DC24V	12W	960 lm	80 lm/W	Ra > 90	2,200K/2,500K/2,700K/3,000K/3,500K/4,000K/ 5,000K/5,700K	0~45°C
HDP18 40K-24V-C90	DC24V	18W	1,440 lm	80 lm/W	Ra > 90	2,200K/2,500K/2,700K/3,000K/3,500K/4,000K/ 5,000K/5,700K	0~45°C
HDP24 40K-24V-C90	DC24V	24W	1,920 lm	80 lm/W	Ra > 90	2,200K/2,500K/2,700K/3,000K/3,500K/4,000K/ 5,000K/5,700K	0~45°C

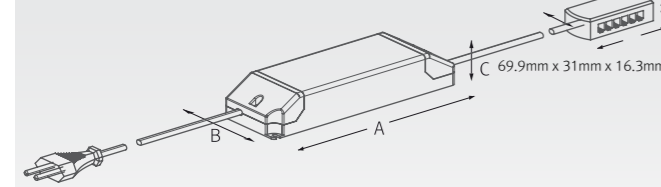
Dimension

Model Name	Power Input (V)	Lamp Power (W)	A (mm)	B (mm)	C (mm)	D (mm)	E (mm)	F (mm)	G (mm)
HDP340K-24V-C90	DC 24	3	139.9	145	162.8	16	15.3	15	14.1
HDP640K-24V-C90	DC24	6	280	285.1	302.9	16	15.3	15	14.1
HDP1240K-24V-C90	DC 24	12	559.5	564.6	582.4	16	15.3	15	14.1
HDP1840K-24V-C90	DC 24	18	838.5	843.6	861.4	16	15.3	15	14.1
HDP2440K-24V-C90	DC 24	24	1,111.6	1,122.7	1,140.5	16	15.3	15	14.1

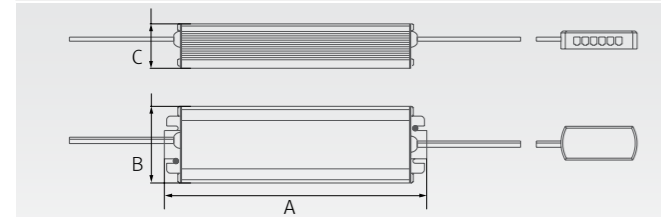


Model Name	A (mm)	B (mm)	C (mm)
FLC15-24V/T	121	45	16
FLC30-24V/T	150	41	31
FLC75-24V/T	180	60	32

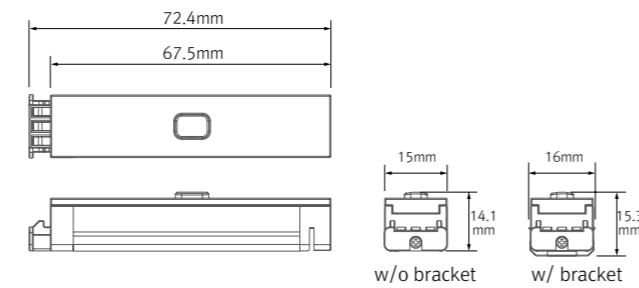
* LED Converter



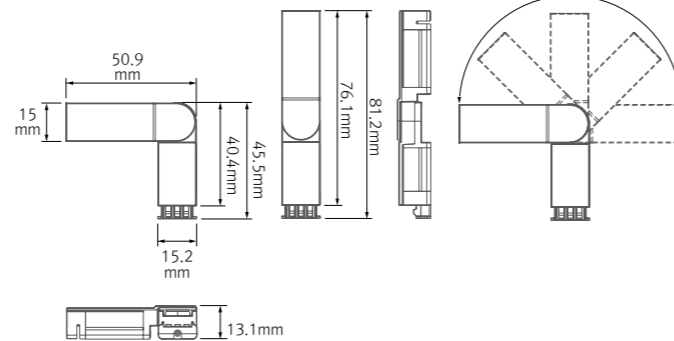
Model Name	A (mm)	B (mm)	C (mm)
FLC200-24V/T	228	68	39



* Inline dimmer



* Flexible connector



Accessories



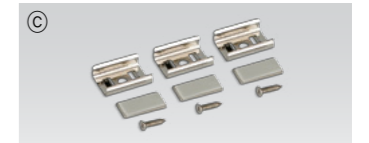
① Connecting cables(between FLX Stix HDPro & FLX Stix HDPro)				
HDPPTC	HDPPTC1	HDPPTC2	HDPPTC4	HDPPTC6
150mm(6inch)	300mm(1feet)	600mm(2feet)	1200mm(4feet)	1800mm(6feet)



② Power cable : HDPPTC (2,500mm)
Power cable (Between FLX Stix HDP/DDP & 12-way distributor)

③ Mounting bracket : HDP-BRACKET 1

HDP-BRACKET1(A) : 1set = 2pcs
HDP-BRACKET1(B) : 1set = 3pcs



④ Angle bracket (15° & 40°) : HDP-BRACKET 2

HDP-BRACKET2(A) : 1set = 2pcs
HDP-BRACKET2(B) : 1set = 3pcs



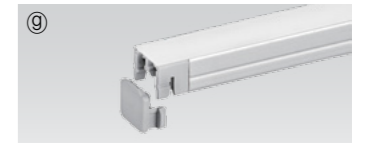
⑤ Sidefeed for seamless extension (3W) : HDP3 40K-24V-S



⑥ Flexible Connector : HDP2 40K-24V-C90-FLEX



⑦ End cap : HDP-CAP



⑧ LED Driver with 12way distributor, with power cord (1800mm)

Part No	FLC15-24V/T	FLC30-24V/T	FLC75-24V/T
Capacity	15W 24V	30W 24V	75W 24V



⑨ LED Driver : FLC200-24V/T (200W 24V)

LED Driver With 12way distributor



⑩ Dimming Interface (1-10V) : FDC-L10

Max. 100W (100W/CH, 1CH)



⑪ Dimming Interface(0-10/1-10,DMX512)

FDA-L2M0 : Max. 200W (100W/CH, 2CH)
FDA-L5M : Max. 200W (50W/CH, 5CH)



⑫ Dimming Interface (Dai): FDD-L1DA

Max. 200W (100W/CH, 1CH)



⑬ Inline dimmer : HDPDIM

Max 75W in a row



⑭ Door and motion detection sensor : FLS-M24V

Voltage : DC 24V



⑮ Human-body detection sensor : FLS-P24V

Voltage : DC 24V



FLX Stix HDV

LED for Display, Cabinet, Furniture & Cove

Little light, Bigger punch!!

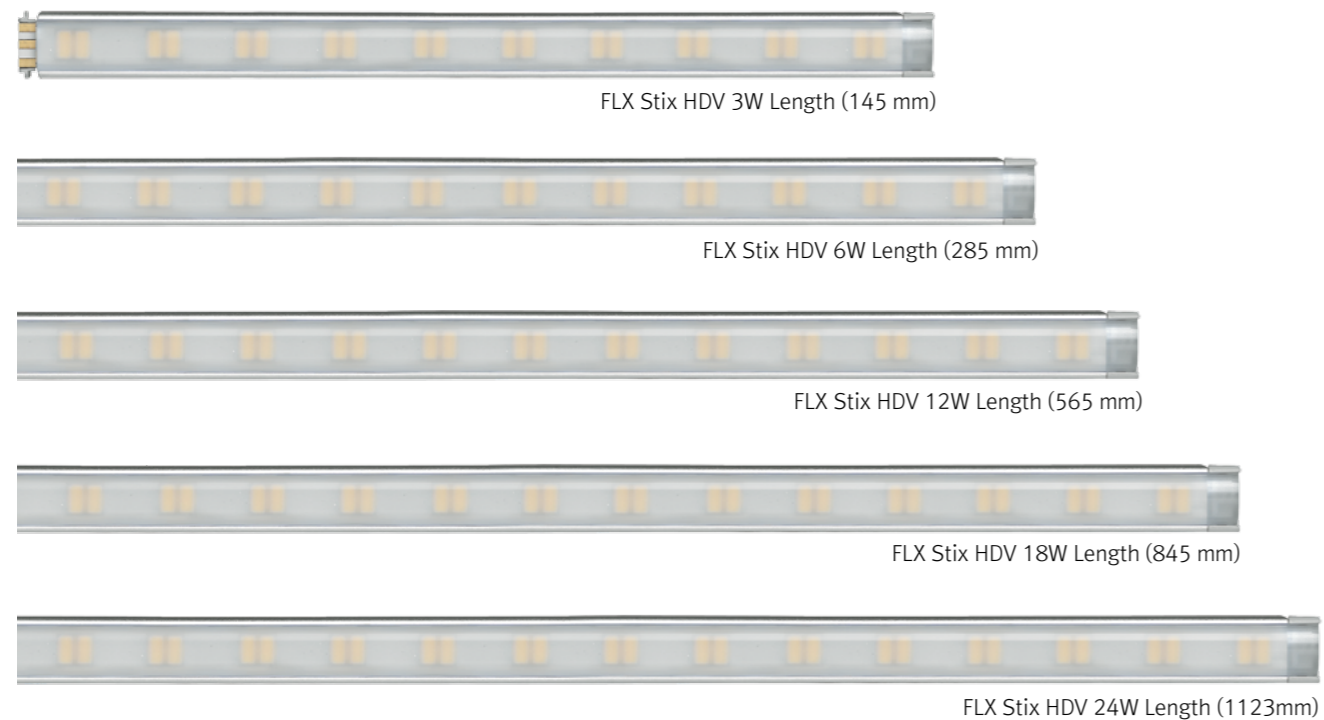


- Super Slim linear LED with high output
- Quick connection system between fixtures
- Many lengths available
- Various mounting methods including magnetic
- To be used with constant voltage DC 24V driver
- Dimmable with available accessories

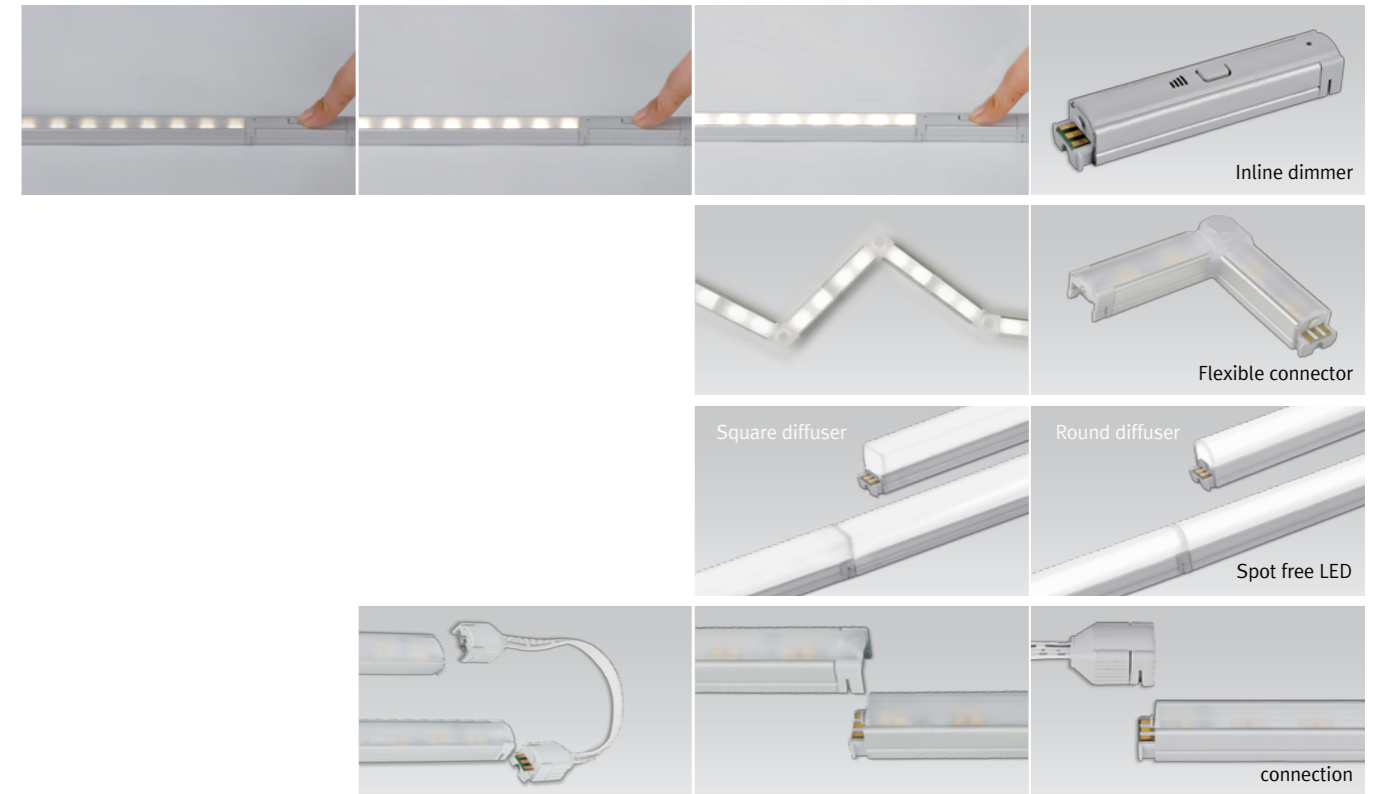




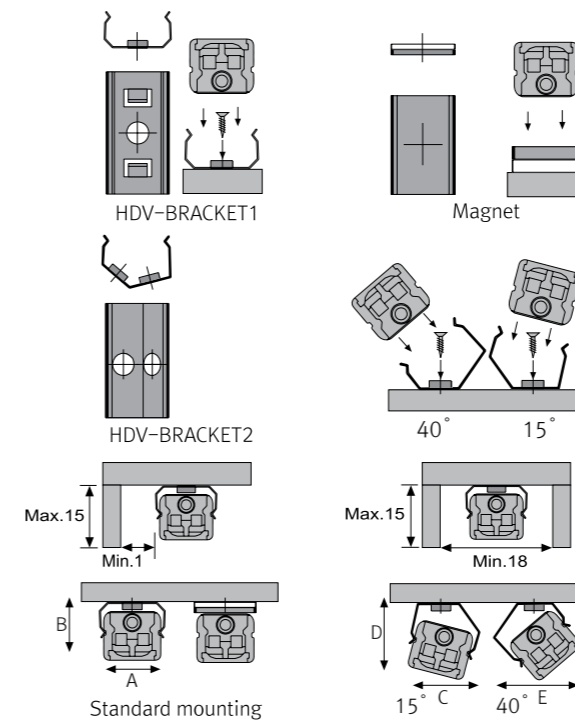
FLX Stix HDV
High Output



Various options



Installation



Max. connection

- FLX Stix HDV : 75W in one row(single power feed)
- LED Driver

Model Name	Max. units for LED Driver			
	24V/15W	24V/30W	24V/75W	24V/200W
HDV3 40K-24V	5	10	25	66
HDV6 40K-24V	2	5	12	33
HDV12 40K-24V	1	2	6	16
HDV18 40K-24V	-	1	4	11
HDV24 40K-24V	-	1	3	8

- W/ Bracket

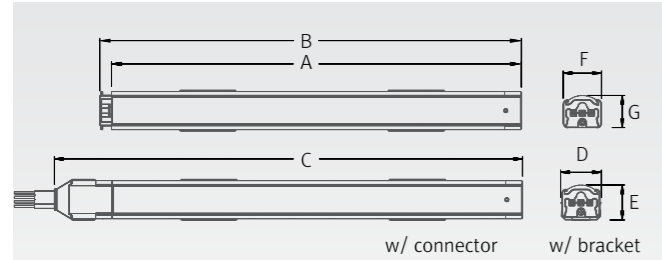
	A(mm)	B(mm)	C(mm)	D(mm)	E(mm)	F(mm)
Flat type	16.8	14.2	17.5	16.5	19.1	17.5
Round type	16.8	22.1	18.8	24.4	23.4	22.9
Square type	16.8	22.6	21.3	26.2	25.7	25.7

Specification

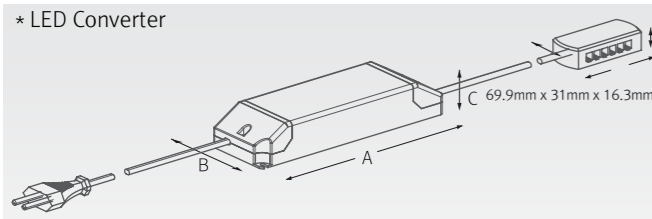
Model Name	Power Input	Lamp Power	Luminous Flux	Efficiency	Color Rendering	Available Color	Operating Temperature
HDV3 40K-24V	DC24V	3W	255lm	85 lm/W	Ra > 85	2,700K/3,000K/3,500K/4,000K/6,000K	0-45°C
HDV6 40K-24V	DC24V	6W	510lm	85 lm/W	Ra > 85	2,700K/3,000K/3,500K/4,000K/6,000K	0-45°C
HDV12 40K-24V	DC24V	12W	1,020lm	85 lm/W	Ra > 85	2,700K/3,000K/3,500K/4,000K/6,000K	0-45°C
HDV18 40K-24V	DC24V	18W	1,530lm	85 lm/W	Ra > 85	2,700K/3,000K/3,500K/4,000K/6,000K	0-45°C
HDV24 40K-24V	DC24V	24W	2,040lm	85 lm/W	Ra > 85	2,700K/3,000K/3,500K/4,000K/6,000K	0-45°C

Dimension

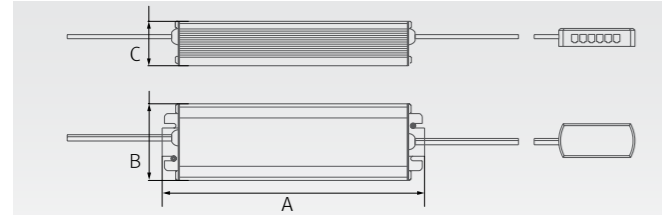
Model Name	Power Input (V)	Lamp Power (W)	A (mm)	B (mm)	C (mm)	D (mm)	E (mm)	F (mm)	G (mm)
HDV340K-24V	DC 24	2.9	140	145	162	16	14	15	12.5
HDV640K-24V	DC24	5.8	280	285	302	16	14	15	12.5
HDV1240K-24V	DC 24	11.6	560	565	582	16	14	15	12.5
HDV1840K-24V	DC 24	17.4	840	845	862	16	14	15	12.5
HDV2440K-24V	DC 24	23.2	1,118	1,123	1,140	16	14	15	12.5



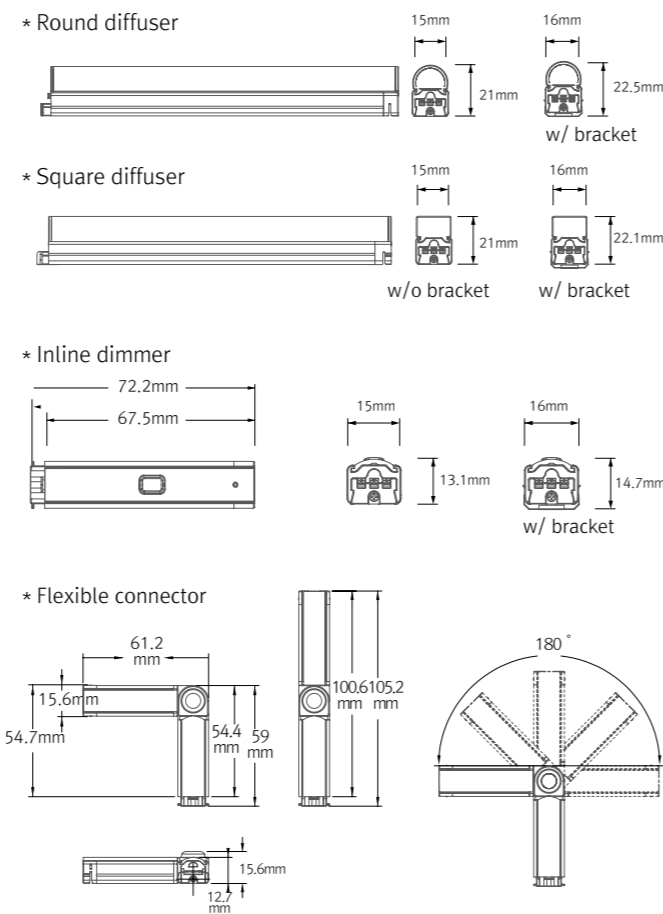
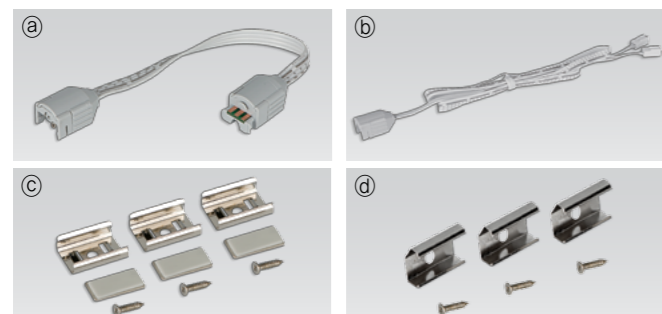
Model Name	A (mm)	B (mm)	C (mm)
FLC15-24V/T	121	45	16
FLC30-24V/T	150	41	31
FLC75-24V/T	180	60	32



Model Name	A (mm)	B (mm)	C (mm)
FLC200-24V/T	228	68	39



Accessories



- Ⓐ Connecting cables (Between FLX Stix HDV & FLX Stix HDV)**

HDVPTC	HDVPTC1	HDVPTC2	HDVPTC4	HDVPTC6
150mm(6inch)	300mm(1feet)	600mm(2feet)	1200mm(4feet)	1800mm(6feet)
- Ⓑ Power cable : HDVPC**
 Power cable 2500mm (Between FLX Stix HDV & 6-way distributor)
- Ⓒ Mounting bracket : HDV-BRACKET1**
 Included in fixture
 HDV-BRACKET1(A) : 1set = 2pcs
 HDV-BRACKET1(B) : 1set = 3pcs
- Ⓓ Angle bracket (15° & 40°) : HDV-BRACKET2**
 HDV-BRACKET2(A) : 1set = 2pcs
 HDV-BRACKET2(B) : 1set = 3pcs

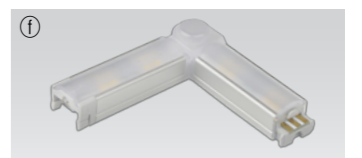
Ⓔ Sidefeed for seamless extension (3W) : HDV3 40K-24V-S

The dimension is the same as HDV3 40K-24V
 Powered only through cable, no power supply on the input connector



Ⓘ Connector : HDV2 40K-24V-FLEX

FLX Stix HDV Flexible connector (2W)



Ⓙ End cap : HDV-CAP

Included in fixture



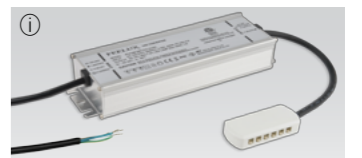
Ⓚ LED Driver with 12way distributor, with power cord (1800mm)

Part No	FLC15-24V/T	FLC30-24V/T	FLC75-24V/T
Capacity	15W 24V	30W 24V	75W 24V



Ⓛ LED Driver : FLC200-24V/T (200W 24V)

LED Driver With 12way distributor



Ⓜ Dimming Interface (1-10V) : FDC-L10

Max. 100W (100W/CH, 1CH)



Ⓨ Dimming Interface(0-10/1-10,DMX512)

FDA-L2M0 : Max. 200W (100W/CH, 2CH)
 FDA-L5M : Max. 200W (100W/CH, 5CH)



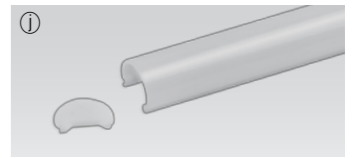
Ⓩ Inline dimmer : HDVDIM

Max 75W in a row



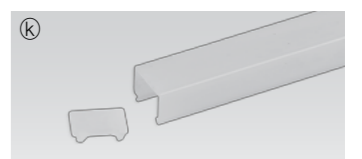
ⓐ Round diffuser

HDV3CVRM	HDV6CVRM	HDV12CVRM	HDV18CVRM	HDV24CVRM
3W	6W	12W	18W	24W



ⓑ Square diffuser

HDV3CVSM	HDV6CVSM	HDV12CVSM	HDV18CVSM	HDV24CVSM
3W	6W	12W	18W	24W



ⓓ Door and motion detection sensor : FLS-M24V

Voltage : DC 24V



ⓓ Human-body detection sensor : FLS-P24V

Voltage : DC 24V



FLX Stix NDPro

LED for Display, Cabinet, Furniture & Cove

Linear perfection with NDPro



- Super Slim linear LED with spot free output
- Quick connection system
- Perfected with color consistency
- No dark spot at the linkage point for seamless effect
- Various mounting methods including magnetic
- Dimmable with available accessories



CONDÉ NAST
INTERNATIONAL LUXURY CONFERENCE
FUTURE LUXURY
2016
VENDOME
in partnership with
SWAROVSKI





FLX Stix NDPro
Standard Output



FLX Stix NDPro .5W length (38 mm)



FLX Stix NDPro 1W length (100 mm)



FLX Stix NDPro 3W length (193 mm)



FLX Stix NDPro 4W length (285 mm)



FLX Stix NDPro 7W length (564 mm)



FLX Stix NDPro 11W length (843 mm)

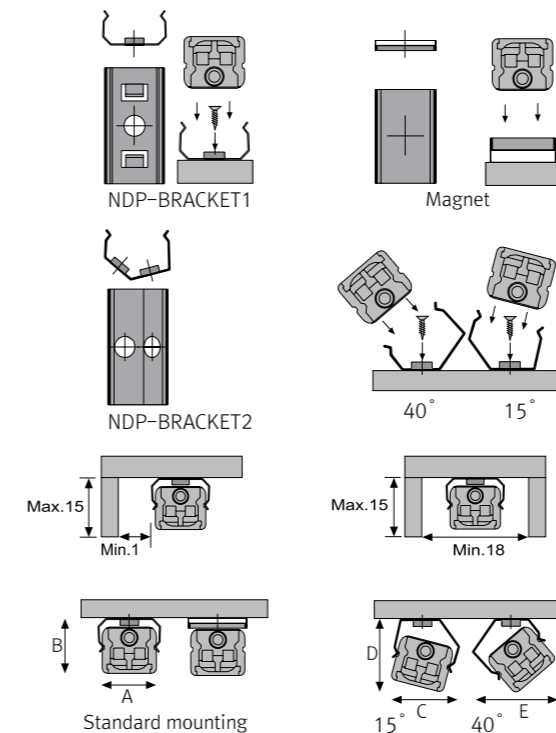


FLX Stix NDPro 15W length (1,122 mm)

Various options



Installation



Max. connection

- 55W in one row(single power feed)
- LED Driver

LED Driver Model Name	Max. units for LED Driver			
	24V/15W	24V/30W	24V/75W	24V/200W
NDP1 40K-24V-C90	12	25	62	160
NDP3 40K-24V-C90	5	10	25	66
NDP4 40K-24V-C90	4	7	18	50
NDP7 40K-24V-C90	2	4	10	28
NDP11 40K-24V-C90	1	2	6	18
NDP15 40K-24V-C90	1	2	5	13

- W/ Bracket

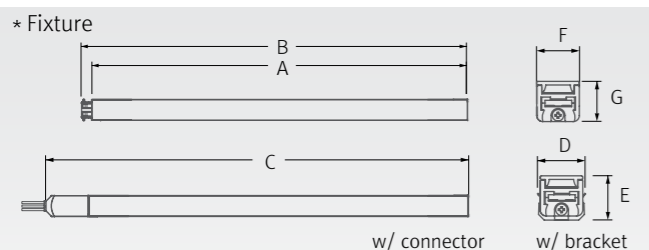
	A(mm)	B(mm)	C(mm)	D(mm)	E(mm)	F(mm)
Flat type	12	11	13.1	14.3	16	14.6

Specification

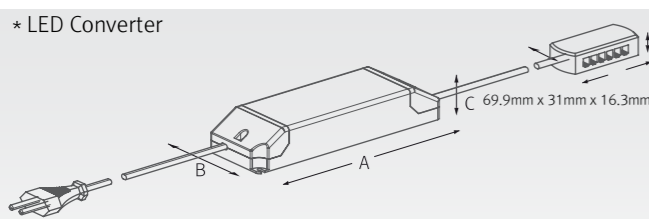
Model Name	Power Input	Lamp Power	Luminous Flux	Efficiency	Color Rendering	Available Color	Operating Temperature
NDP1 40K-24V-C90-L38	DC24V	.5W	40 lm	80 lm/W	Ra > 90	2,200K/2,500K/2,700K/3,000K/3,500K/ 4,000K/5,000K /5,700K	0-45°C
NDP1 40K-24V-C90	DC24V	1.2W	80 lm	80 lm/W	Ra > 90	2,200K/2,500K/2,700K/3,000K/3,500K/ 4,000K/5,000K /5,700K	0-45°C
NDP3 40K-24V-C90	DC24V	3W	240 lm	80 lm/W	Ra > 90	2,200K/2,500K/2,700K/3,000K/3,500K/ 4,000K/5,000K /5,700K	0-45°C
NDP4 40K-24V-C90	DC24V	4W	320 lm	80 lm/W	Ra > 90	2,200K/2,500K/2,700K/3,000K/3,500K/ 4,000K/5,000K /5,700K	0-45°C
NDP7 40K-24V-C90	DC24V	7W	560 lm	80 lm/W	Ra > 90	2,200K/2,500K/2,700K/3,000K/3,500K/ 4,000K/5,000K /5,700K	0-45°C
NDP11 40K-24V-C90	DC24V	11W	880 lm	80 lm/W	Ra > 90	2,200K/2,500K/2,700K/3,000K/3,500K/ 4,000K/5,000K /5,700K	0-45°C
NDP15 40K-24V-C90	DC24V	15W	1,200 lm	80 lm/W	Ra > 90	2,200K/2,500K/2,700K/3,000K/3,500K/ 4,000K/5,000K /5,700K	0-45°C

Dimension

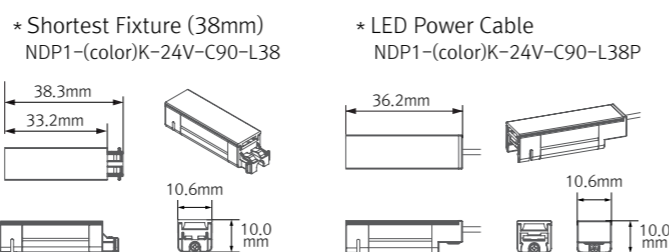
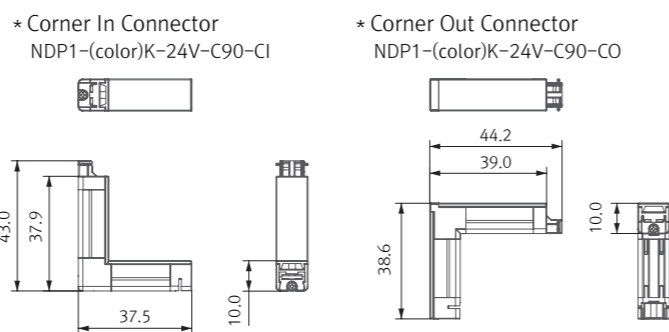
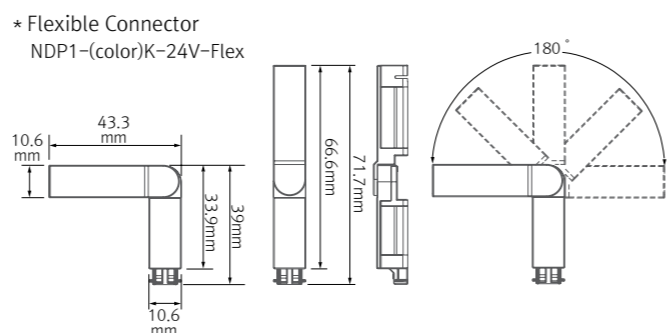
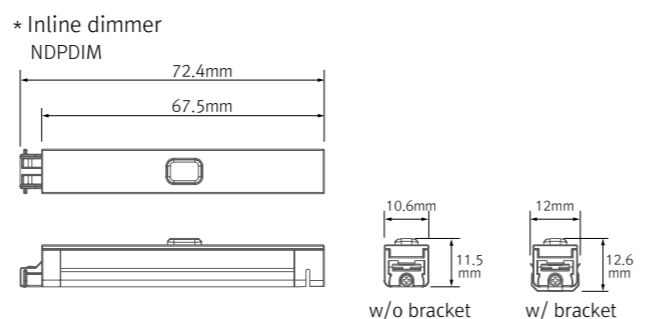
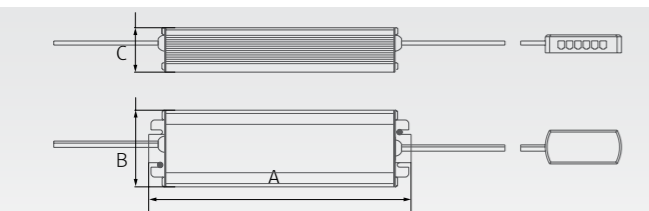
Model Name	Power Input (V)	Lamp Power (W)	A (mm)	B (mm)	C (mm)	D (mm)	E (mm)	F (mm)	G (mm)
NDP140K-24V-C90-L38	DC 24	.5	33.2	38.3	55.12	12	11	10.6	10
NDP1 40K-24V-C90	DC 24	1	94.7	99.8	116.9	12	11	10.6	10
NDP340K-24V-C90	DC 24	3	188.2	193.3	210.4	12	11	10.6	10
NDP440K-24V-C90	DC 24	4	279.2	284.3	301.4	12	11	10.6	10
NDP740K-24V-C90	DC 24	7	558.7	563.8	580.9	12	11	10.6	10
NDP1140K-24V-C90	DC 24	11	837.7	842.8	859.9	12	11	10.6	10
NDP1540K-24V-C90	DC 24	14	1,116.8	1,121.9	1,139	12	11	10.6	10



Model Name	A (mm)	B (mm)	C (mm)
FLC30-24V/T	150	41	31
FLC75-24V/T	180	60	32



Model Name	A (mm)	B (mm)	C (mm)
FLC200-24V/T	228	68	39



Accessories

Ⓐ Connecting cables (Between FLX Stix NDPro & FLX Stix NDPro)
 NDPPTC | NDPPTC1 | NDPPTC2 | NDPPTC4 | NDPPTC6
 150mm(6inch) | 300mm(1feet) | 600mm(2feet) | 1200mm(4feet) | 1800mm(6feet)

Ⓑ Power cable : NDPPC (2,500mm)
 Power cable (Between FLX Stix NDP & 12-way distributor)

Ⓒ LED Power cable : NDP1 40K-24V-C90-L38P
 Fixture (36mm)
 Power cable (2,500mm)

Ⓓ Mounting bracket : NDP-BRACKET 1
 NDP-BRACKET1(A) : 1set = 2pcs
 NDP-BRACKET1(B) : 1set = 3pcs

Ⓔ Angle bracket (15° & 40°) : NDP-BRACKET 2
 NDP-BRACKET2(A) : 1set = 2pcs
 NDP-BRACKET2(B) : 1set = 3pcs

Ⓕ Sidefeed for seamless extension (3W) : NDP3 40K-24V-S
 The dimension is the same as NDP3 40K-24V
 Powered only through cable, no power supply on the input connector

Ⓖ Flexible Connector : NDP1 40K-24V-C90-FLEX

Ⓗ Corner In Connector : NDP1 40K-24V-C90-CI

Ⓙ Corner Out Connector : NDP1 40K-24V-C90-CO

Ⓛ End cap : NDP-CAP
 Included in fixture

Ⓚ LED Driver with 12way distributor, with power cord (1800mm)

Part No	FLC15-24V/T	FLC30-24V/T	FLC75-24V/T
Capacity	15W 24V	30W 24V	75W 24V

Ⓛ LED Driver : FLC200-24V/T (200W 24V)
 LED Driver With 12way distributor

Ⓜ Dimming Interface (1-10V) : FDC-L10
 Max. 100W (100W/CH, 1CH)

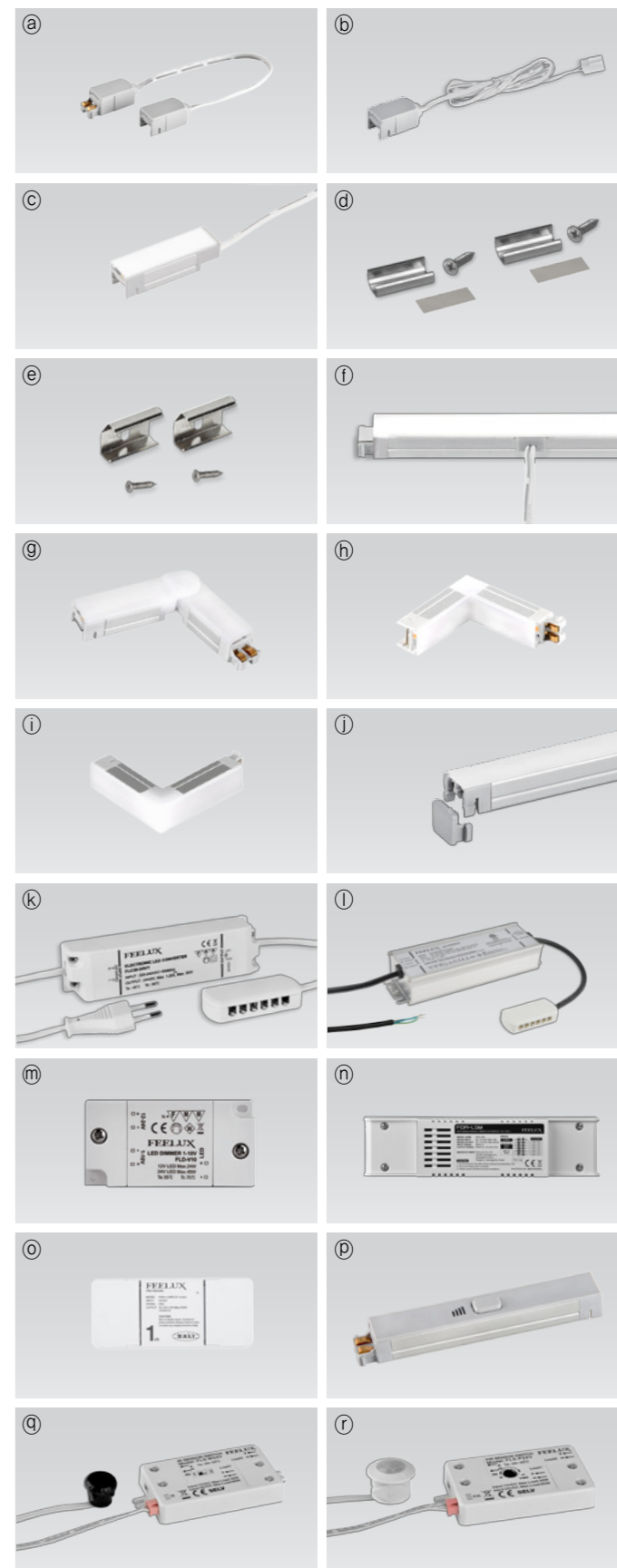
Ⓝ Dimming Interface(0-10/1-10,DMX512)
 FDA-L2M0 : Max. 200W (100W/CH, 2CH)
 FDA-L5M : Max. 200W (50W/CH, 5CH)

Ⓞ Dimming Interface (Dail) : FDD-L1DA
 Max. 200W (100W/CH, 1CH)

Ⓟ Inline dimmer : NDPDIM
 Max 55W in a row

Ⓠ Door and motion detection sensor : FLS-M24V
 Voltage : DC 24V

Ⓡ Human-body detection sensor : FLS-P24V
 Voltage : DC 24V

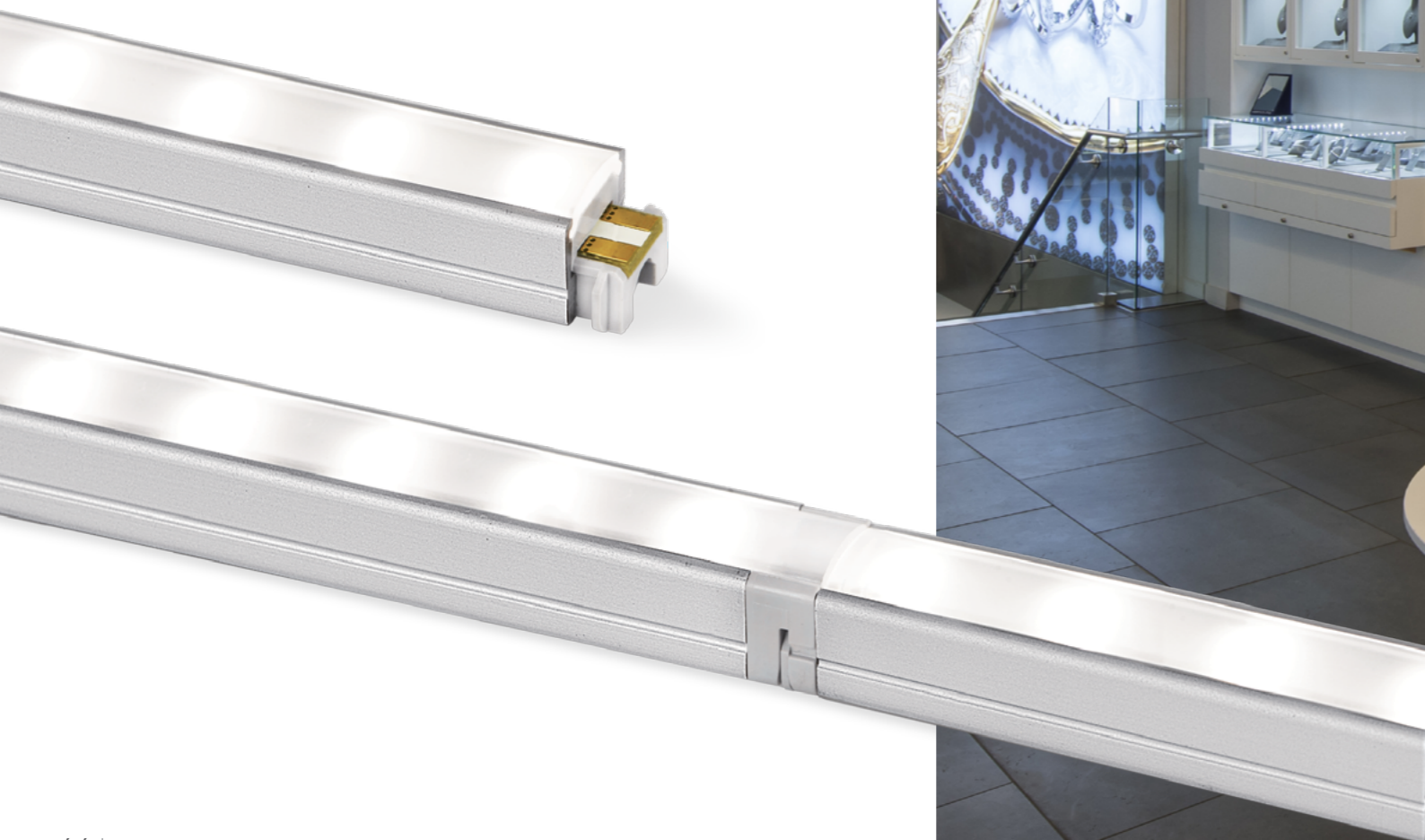


FLX Stix NDV*LED for Display, Cabinet, Furniture & Cove*

Little light, Big punch!!



- Super Slim linear LED with standard output
- Quick connection system between fixtures
- Many lengths available
- Various mounting methods including magnetic
- To be used with constant voltage DC 24V driver
- Dimmable with available accessories





FLX Stix NDV
Standard Output



FLX Stix NDV 1W length (100 mm)



FLX Stix NDV 3W length (192 mm)



FLX Stix NDV 4W length (285 mm)



FLX Stix NDV 7W length (565 mm)

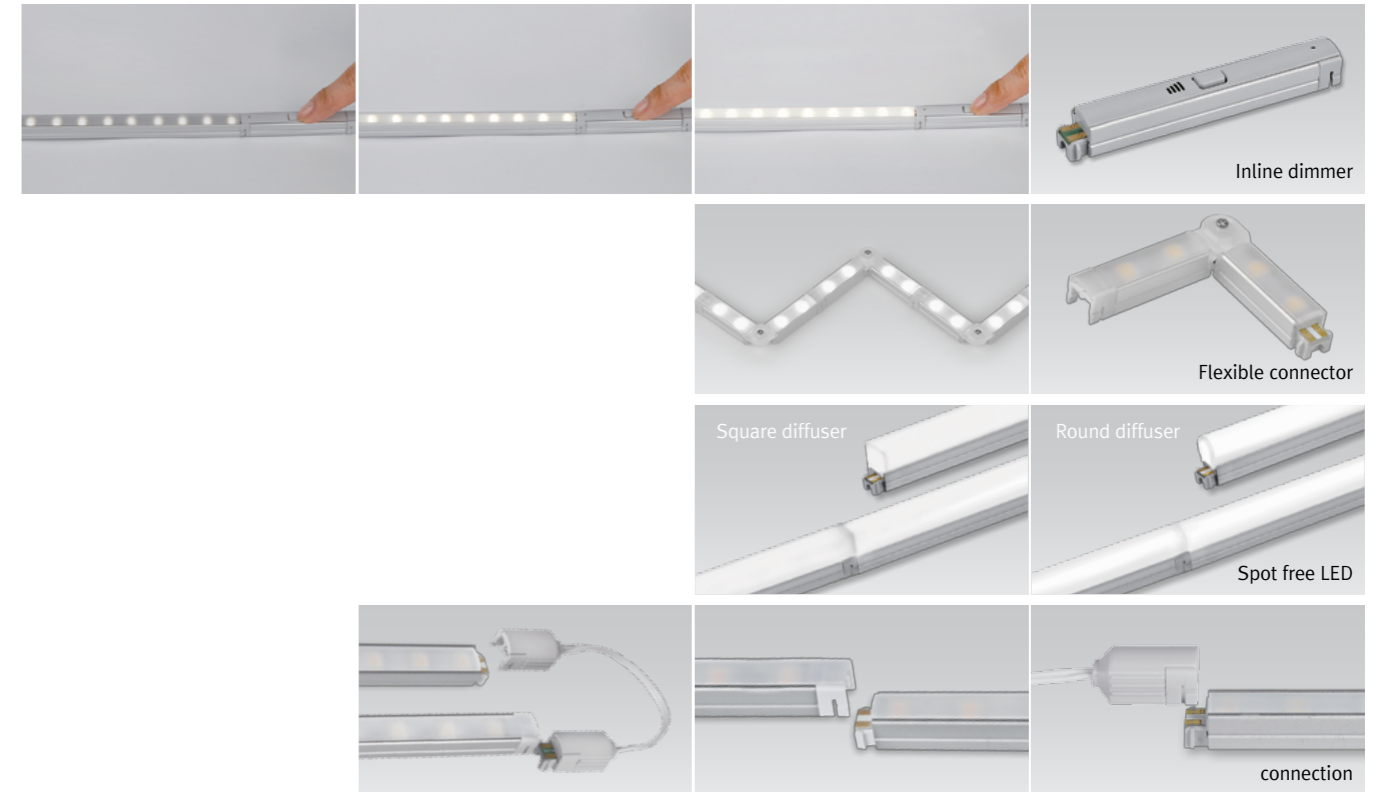


FLX Stix NDV 11W length (845 mm)

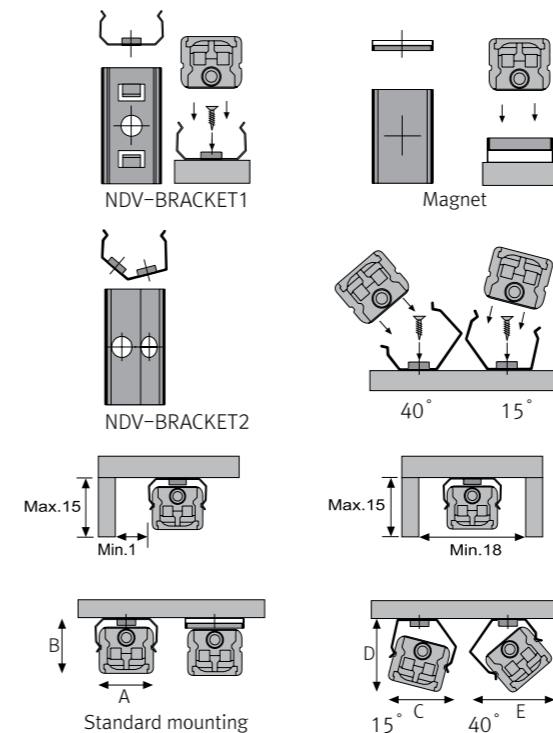


FLX Stix NDV 15W length (1123mm)

Various options



Installation



Max. connection

- FLX Stix NDV : 55W in one row(single power feed)
- LED Driver

Model Name	Max. units for LED Driver			
	24V/15W	24V/30W	24V/75W	24V/200W
NDV1 40K-24V	12	25	62	160
NDV3 40K-24V	5	10	25	66
NDV4 40K-24V	4	7	18	50
NDV7 40K-24V	2	4	10	28
NDV11 40K-24V	1	2	6	18
NDV14 40K-24V	1	2	5	13

- W/ Bracket

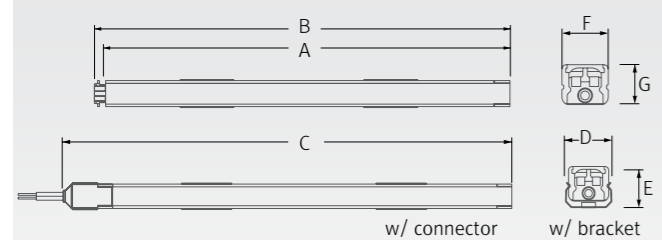
	A(mm)	B(mm)	C(mm)	D(mm)	E(mm)	F(mm)
Flat type	11.9	11.2	13.5	13.5	14.5	13
Round type	11.9	19.8	15.7	15.7	18.8	20.3
Square type	11.9	19.6	15.5	15.8	18.8	20.3

Specification

Model Name	Power Input	Lamp Power	Luminous Flux	Efficiency	Color Rendering	Available Color	Operating Temperature
NDV1 40K-24V	DC24V	1W	75 lm	75 lm/W	Ra > 85	2,700K/3,000K/3,500K/4,000K/6,000K	0-45°C
NDV3 40K-24V	DC24V	3W	225 lm	75 lm/W	Ra > 85	2,700K/3,000K/3,500K/4,000K/6,000K	0-45°C
NDV4 40K-24V	DC24V	4W	300lm	75 lm/W	Ra > 85	2,700K/3,000K/3,500K/4,000K/6,000K	0-45°C
NDV7 40K-24V	DC24V	7W	525lm	75 lm/W	Ra > 85	2,700K/3,000K/3,500K/4,000K/6,000K	0-45°C
NDV11 40K-24V	DC24V	11W	825lm	75 lm/W	Ra > 85	2,700K/3,000K/3,500K/4,000K/6,000K	0-45°C
NDV15 40K-24V	DC24V	15W	1,125lm	75 lm/W	Ra > 85	2,700K/3,000K/3,500K/4,000K/6,000K	0-45°C

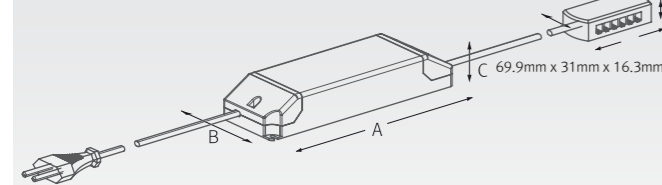
Dimension

Model Name	Power Input (V)	Lamp Power (W)	A (mm)	B (mm)	C (mm)	D (mm)	E (mm)	F (mm)	G (mm)
NDV1 40K-24V	DC 24	1	95	100	117	12	11	10.6	9
NDV3 40K-24V	DC24	3	188	192	210	12	11	10.6	9
NDV4 40K-24V	DC 24	4	280	285	302	12	11	10.6	9
NDV7 40K-24V	DC 24	7	560	565	582	12	11	10.6	9
NDV11 40K-24V	DC 24	11	840	845	862	12	11	10.6	9
NDV15 40K-24V	DC 24	14	1,118	1,123	1,140	12	11	10.6	9

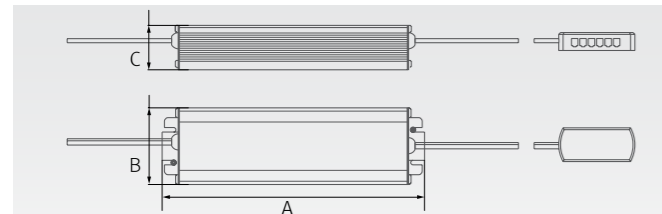


Model Name	A (mm)	B (mm)	C (mm)
FLC15-24V/T	121	45	16
FLC30-24V/T	150	41	31
FLC75-24V/T	180	60	32

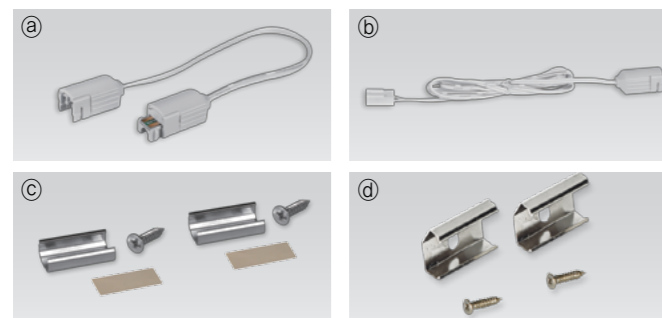
*** LED Converter**



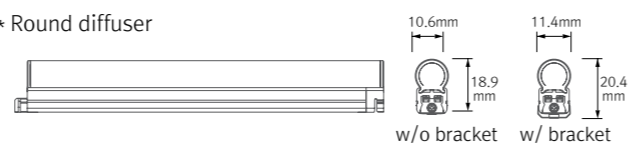
Model Name	A (mm)	B (mm)	C (mm)
FLC200-24V/T	228	68	39



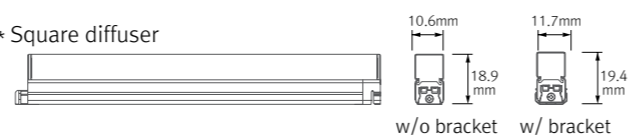
Accessories



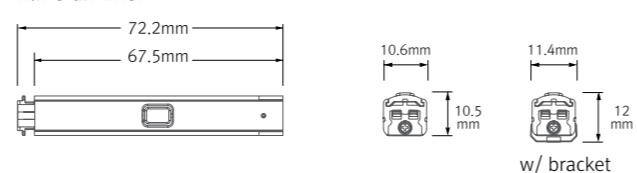
*** Round diffuser**



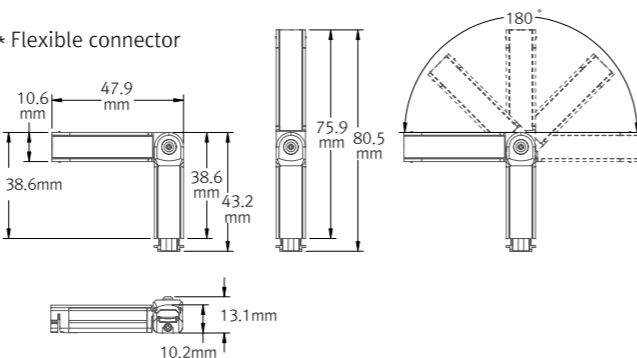
*** Square diffuser**



*** Inline dimmer**



*** Flexible connector**



ⓐ Connecting cables(between FLX Stix NDV & FLX Stix NDV)

NDVPTC	NDVPTC1	NDVPTC2	NDVPTC4	NDVPTC6
150mm(6inch)	300mm(1feet)	600mm(2feet)	1200mm(4feet)	1800mm(6feet)

ⓑ Power cable : NDVPC

Power cable (Between DIVA2 & 6-way distributor)

ⓒ Mounting bracket : NDV-BRACKET 1

Included in fixture
 NDV-BRACKET1(A) : 1set = 2pcs
 NDV-BRACKET1(B) : 1set = 3pcs

ⓓ Angle bracket (15° & 40°) : NDV-BRACKET 2

NDV-BRACKET2(A) : 1set = 2pcs
 NDV-BRACKET2(B) : 1set = 3pcs

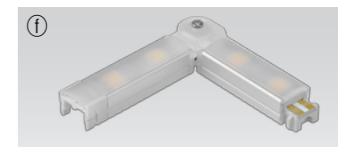
ⓔ Sidefeed for seamless extension (3W) : NDV3 40K-24V-S

The dimension is the same as NDV3 40K-24V
 Powered only through cable, no power supply on the input connector



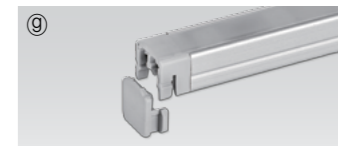
ⓕ Connector : NDV1 40K-24V-FLEX

FLX Stix NDV Flexible connector(1W)



ⓖ End cap : NDV-CAP

Included in fixture



ⓗ LED Driver with 12way distributor, with power cord (1800mm)

Part No	FLC15-24V/T	FLC30-24V/T	FLC75-24V/T
Capacity	15W 24V	30W 24V	75W 24V



ⓓ LED Driver : FLC200-24V/T (200W 24V)

LED Driver With 12way distributor



ⓓ Dimming Interface(0-10/1-10,DMX512)

FDA-L2M0 : Max. 200W (100W/CH, 2CH)
 FDA-L5M : Max. 200W (100W/CH, 5CH)



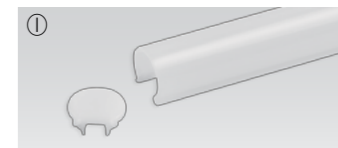
ⓓ Inline dimmer : NDVDIM

Max 55W in a row



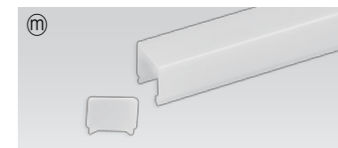
ⓓ Round diffuser

NDV1CVRM	NDV3CVRM	NDV4CVRM	NDV7CVRM	NDV11CVRM	NDV15CVRM
1W	3W	4W	7W	11W	15W



ⓓ Square diffuser

NDV1CVSM	NDV3CVSM	NDV4CVSM	NDV7CVSM	NDV11CVSM	NDV15CVSM
1W	3W	4W	7W	11W	15W



ⓓ Door and motion detection sensor : FLS-M24V

Voltage : DC 24V



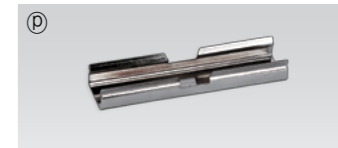
ⓓ Human-body detection sensor : FLS-P24V

Voltage : DC 24V



ⓓ Connecting bracket : NDV-BRACKET3

Included in fixture



ⓓ Power bracket : NDV-BRACKET4

Provided with Power cable (NDVPC)



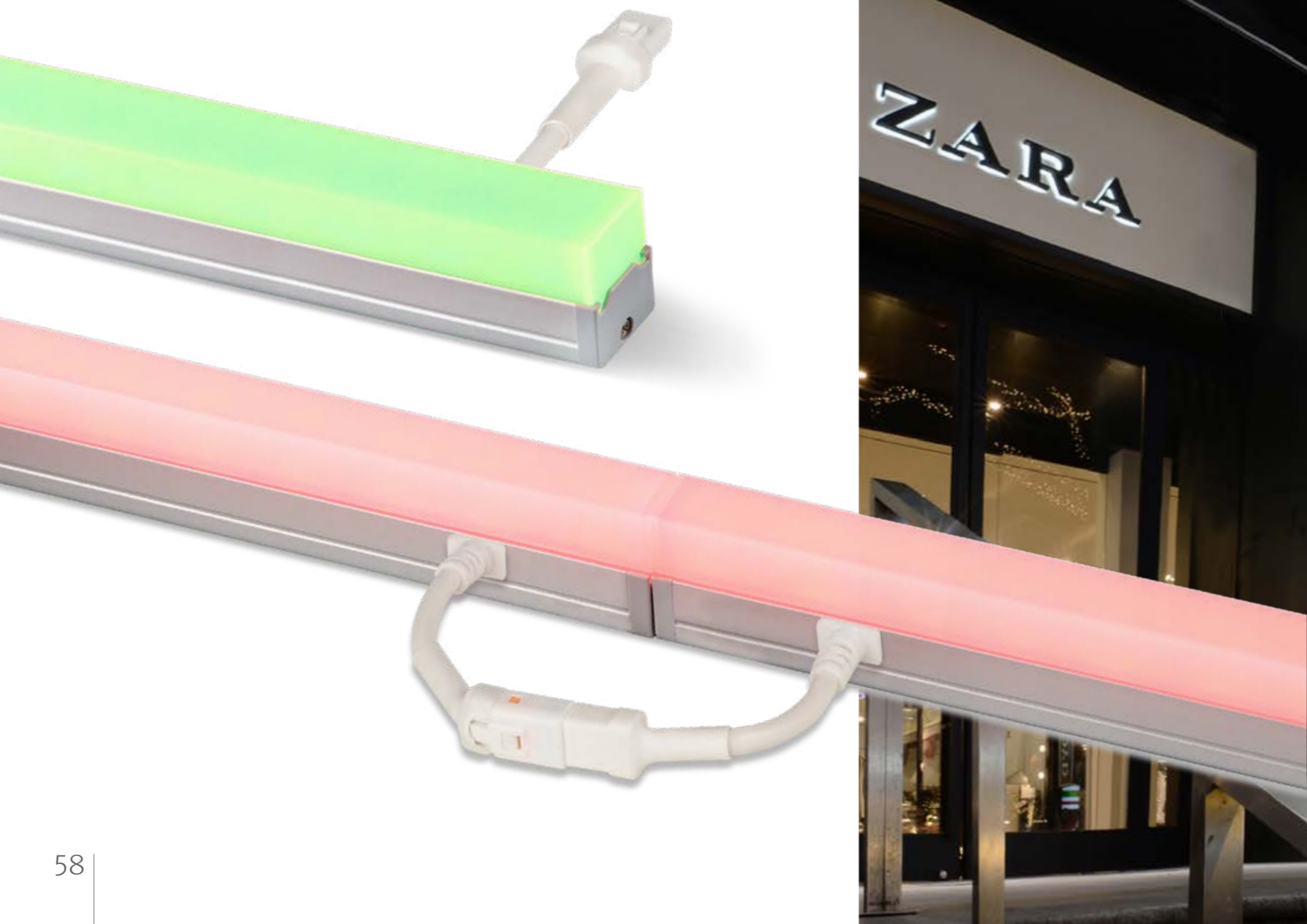
FLX Stix ODV

LED for Outdoor installation

Light Creatures in the Night



- Slim linear LED with color changing output and a dimmable system
- Various length available
- To be used with constant voltage DC 24 driver



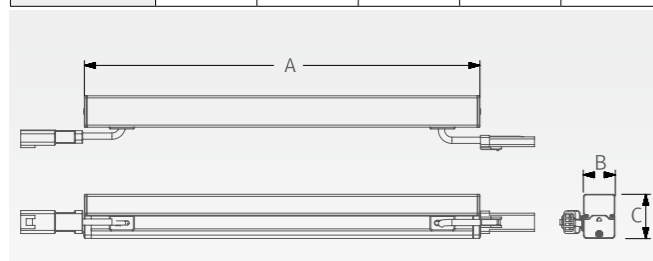


Specification

Model Name	Power Input	Lamp Power	Available Color	Operating Temperature	IP
ODV3 40K-24V	DC24V	3W	2,700K / 3,000K / 4,000K	0~45°C	IP66
ODV6 40K-24V	DC24V	6W	2,700K / 3,000K / 4,000K	0~45°C	IP66
ODV12 40K-24V	DC24V	12W	2,700K / 3,000K / 4,000K	0~45°C	IP66
ODV18 40K-24V	DC24V	18W	2,700K / 3,000K / 4,000K	0~45°C	IP66
ODV4 RGB-24V	DC24V	4W	R·G·B	0~45°C	IP66
ODV6 RGB-24V	DC24V	6W	R·G·B	0~45°C	IP66
ODV12 RGB-24V	DC24V	12W	R·G·B	0~45°C	IP66
ODV18 RGB-24V	DC24V	18W	R·G·B	0~45°C	IP66

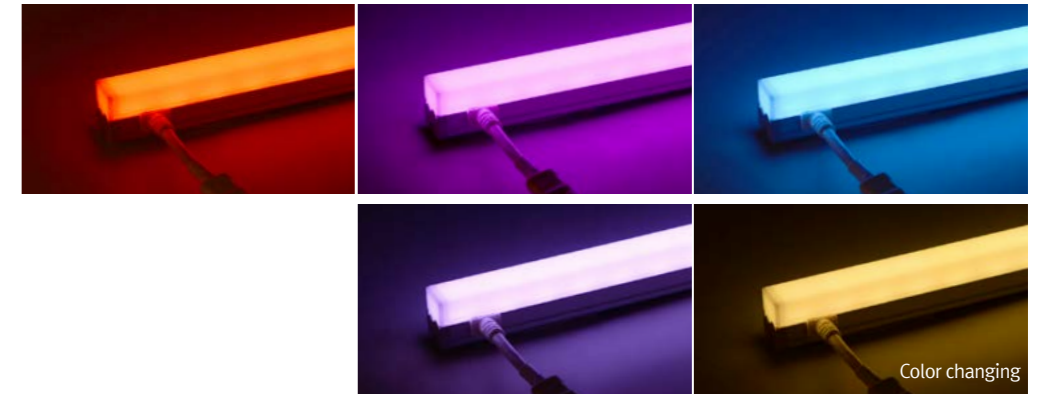
Dimension

Model Name	Power Input (V)	Lamp Power (W)	A (mm)	B (mm)	C (mm)
ODV3 40K-24V	DC24	3	142.4	15	22.1
ODV6 40K-24V	DC24	6	282.5	15	22.1
ODV12 40K-24V	DC24	12	562	15	22.1
ODV18 40K-24V	DC24	18	841	15	22.1
ODV4 RGB-24V	DC24	4	190.5	15	22.1
ODV6 RGB-24V	DC24	6	282.5	15	22.1
ODV12 RGB-24V	DC24	12	562	15	22.1
ODV18 RGB-24V	DC24	18	841	15	22.1



Model Name	A (mm)	B (mm)	C (mm)
FLC200-24V/T	228	68	39

Various options



Accessories

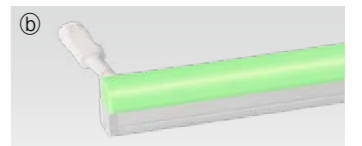
Ⓐ Fixture : FLX Stix ODV (Single kelvin)

- ODV3 40K-24V (3W)
- ODV6 40K-24V (6W)
- ODV12 40K-24V (12W)
- ODV18 40K-24V (18W)



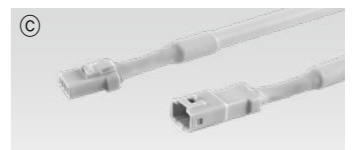
Ⓑ Fixture : FLX Stix ODV (RGB Color changing)

- ODV4 RGB-24V (4W)
- ODV6 RGB-24V (6W)
- ODV12 RGB-24V (12W)
- ODV18 RGB-24V (18W)



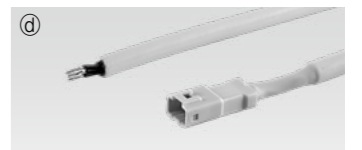
Ⓒ Connecting cable (Between FLX Stix ODV & FLX Stix ODV)

ODVPTC	ODVPTC1	ODVPTC2	ODVPTC4	ODVPTC6
150mm(6inch)	300mm(1feet)	600mm(2feet)	1,200mm(4feet)	1,800mm(6feet)



Ⓓ Power cable (Open power cable for FLX Stix ODV) : ODVPC

- ODVPC(Non dimming) 2,500mm/4,000mm/6,000mm
- ODVOPC(Dimming) 2,500mm/4,000mm/6,000mm



Ⓔ Mounting bracket : ODV-BRACKET

- Included in fixture
- ODV-BRACKET(A) : 1set = 2pcs
- ODV-BRACKET(B) : 1set = 3pcs



Ⓕ LED Driver with 12way distributor, with power cord(1,800mm)

Part No	FLC15-24V/T	FLC30-24V/T	FLC75-24V-P/T
Capacity	15W 24V	30W 24V	75W 24V



Ⓖ LED Driver : FLC200-24V/T (200W, DC24V)

- IP66



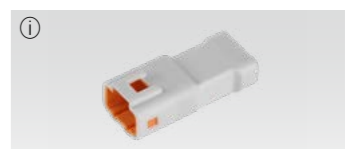
Ⓗ Dimming Interface (0-10/1-10, DMX512)

- FDA-L2M0 : Max. 200W (100W/CH, 2CH)
- FDA-L5M : Max. 200W (50W/CH, 5CH)



Ⓙ End cap : ODV-CAP

- Included in fixture



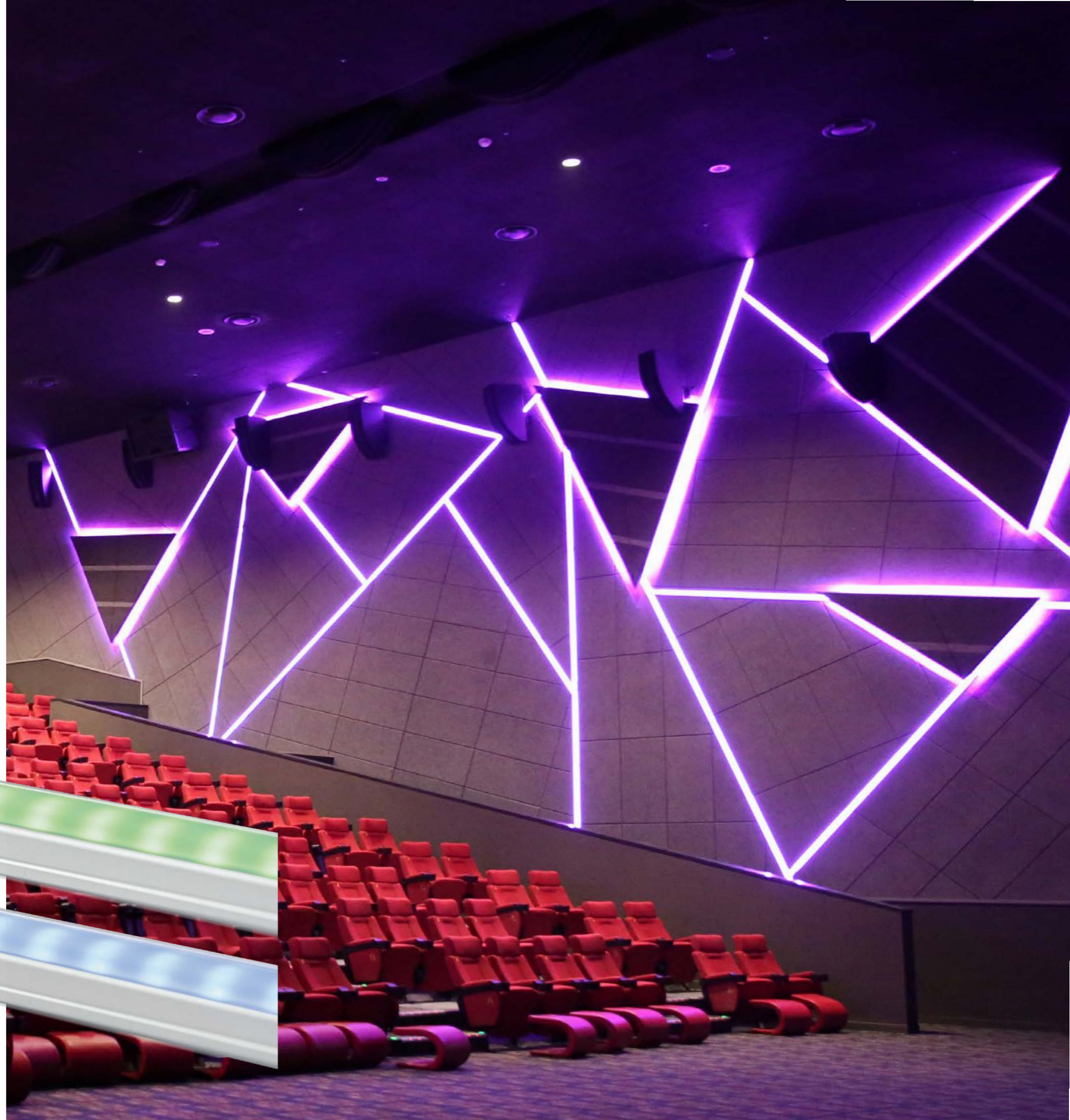
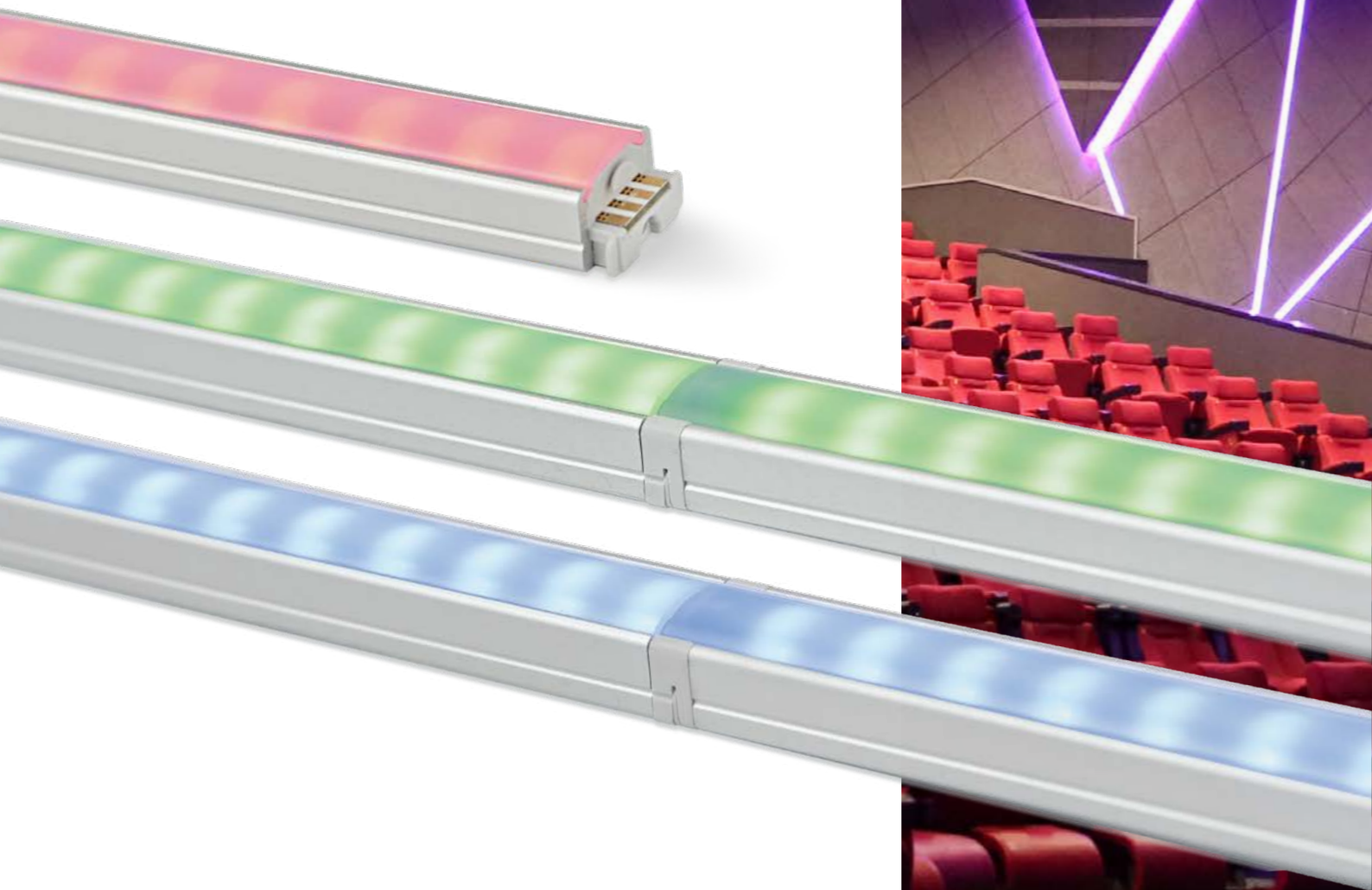
FLX Stix RDV

LED for Display, Cabinet, Furniture & Cove

Color changing LED!



- Super slim linear LED with RGB color changing output
- Quick connection system between fixtures
- Many lengths available
- Various mounting methods including magnetic
- To be used with constant voltage DC 24V driver
- Dimmable with available accessories

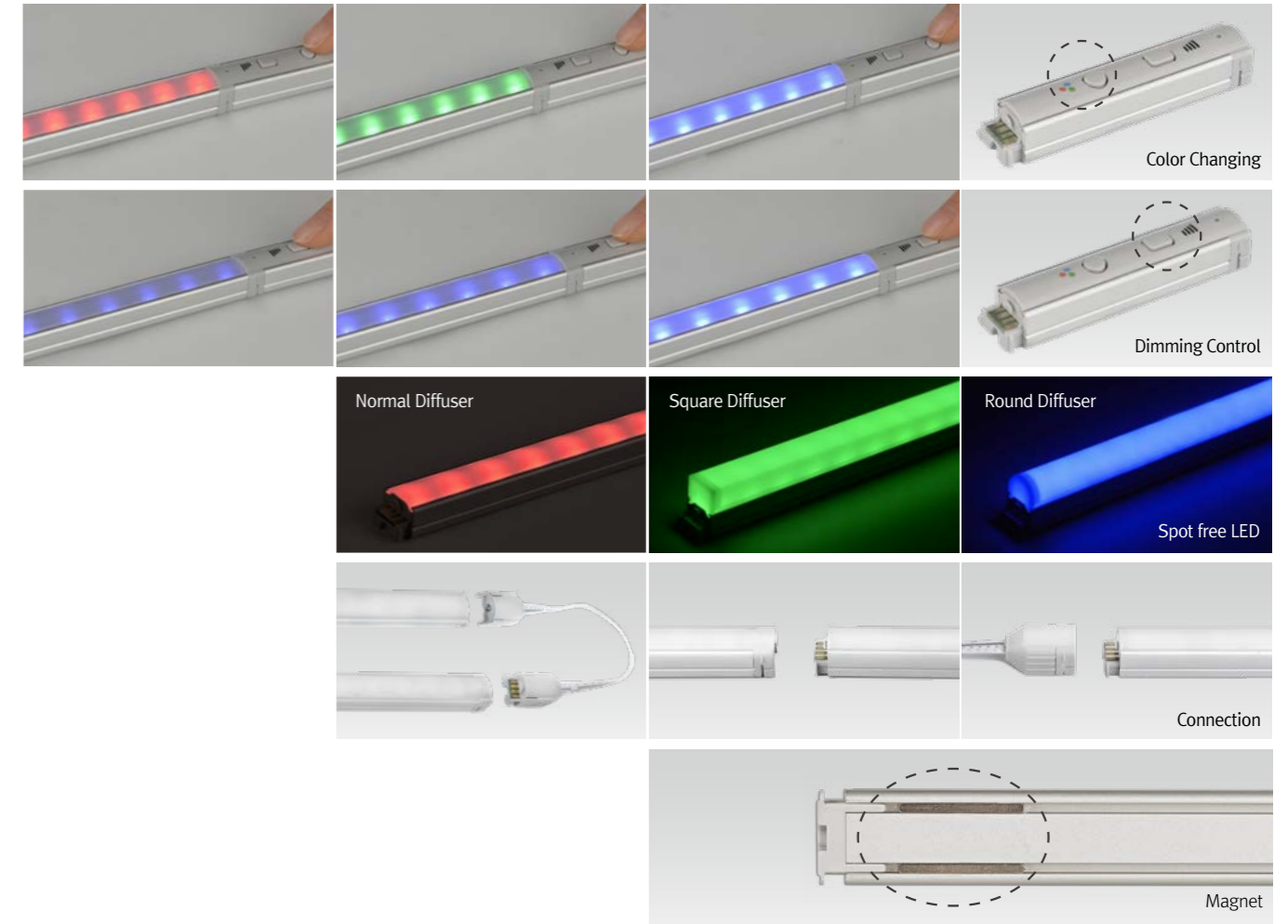




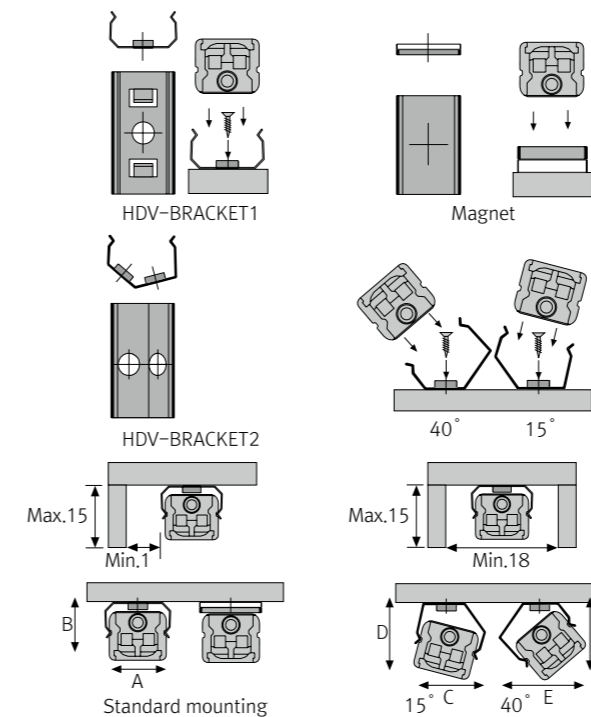
FLX Stix RDV
RGB Color changing



Various options



Installation



Max. connection

- FLX Stix DDV : 75W in one row (single power feed)
- LED Driver

LED Driver Model Name	Max. units for LED Driver			
	24V/15W	24V/30W	24V/75W	24V/200W
RDV6 RGB-24V	2	5	12	27
RDV12 RGB-24V	1	2	6	14
RDV18 RGB-24V	-	1	4	9

- W/ Bracket

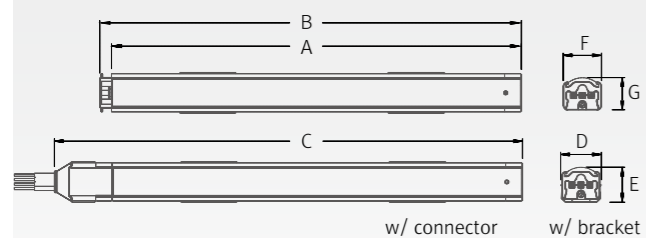
	A(mm)	B(mm)	C(mm)	D(mm)	E(mm)	F(mm)
Standard	16.8	14.2	17.5	16.5	19.1	17.5
Round type	16.8	22.1	18.8	24.4	23.4	22.9
Square type	16.8	22.6	21.3	26.2	25.7	25.7

Specification

Model Name	Power Input	Lamp Power	Color Temperature	Operating Temperature	IP
RDV6 RGB-24V	DC24V	6W	R·G·B	0-45°C	IP20
RDV12 RGB-24V	DC24V	12W	R·G·B	0-45°C	IP20
RDV18 RGB-24V	DC24V	18W	R·G·B	0-45°C	IP20

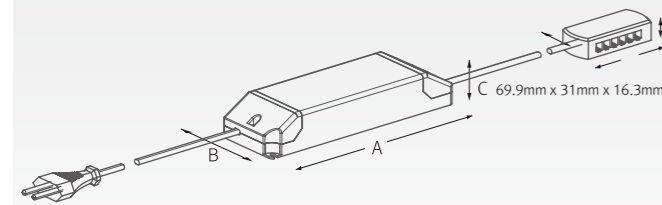
Dimension

Model Name	Power Input (V)	Lamp Power (W)	A (mm)	B (mm)	C (mm)	D (mm)	E (mm)	F (mm)	G (mm)
RDV6 RGB-24V	DC 24	6.2	280	285	302	16	14	15	12.5
RDV12 RGB-24V	DC24	12.4	560	565	582	16	14	15	12.5
RDV18 RGB-24V	DC 24	18.6	840	845	862	16	14	15	12.5

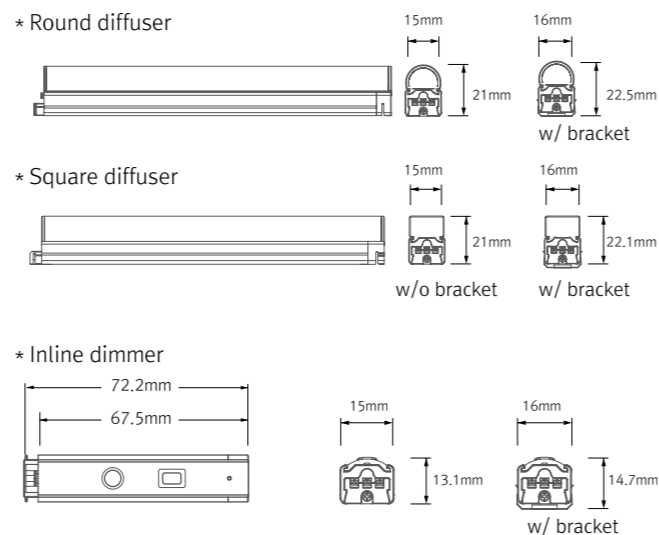
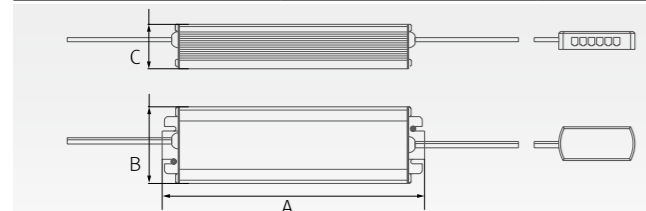


Model Name	A (mm)	B (mm)	C (mm)
FLC15-24V/T	121	45	16
FLC30-24V/T	150	41	31
FLC75-24V-P/T	180	60	32

*** LED Driver**



Model Name	A (mm)	B (mm)	C (mm)
FLC200-24V/T	228	68	39



Accessories

Ⓐ Connecting cables (Between FLX Stix RDV & FLX Stix RDV)

RDVPTC	RDVPTC1	RDVPTC2	RDVPTC4	RDVPTC6
150mm(6inch)	300mm(1feet)	600mm(2feet)	1,200mm(4feet)	1,800mm(6feet)



Ⓑ Power cable : RDVPC (2,500mm)
Power cable (Between FLX Stix RDV & 12-way distributor)



Ⓒ Mounting bracket : HDV-BRACKET1
HDV-BRACKET1(A) : 1set = 2pcs
HDV-BRACKET1(B) : 1set = 3pcs



Ⓓ Angle bracket (15° & 40°) : HDV-BRACKET2
HDV-BRACKET2(A) : 1set = 2pcs
HDV-BRACKET2(B) : 1set = 3pcs



Ⓔ Sidefeed for seamless extension (6W) : RDV6 RGB-24V-S
The dimension is the same as RDV6 RGB-24V
Powered only through cable, no power supply on the input connector



Ⓛ End cap : HDV - CAP
Included in fixture



Ⓜ LED Driver with 12way distributor, with power cord(1,800mm)

Part No	FLC15-24V/T	FLC30-24V/T	FLC75-24V-P/T
Capacity	15W 24V	30W 24V	75W 24V



Ⓨ LED Driver : FLC200-24V/T (200W, DC24V)
LED Driver With 12way distributor



Ⓩ Dimming Interface (DMX512)
FDA-L5M : Max. 200W (50W/CH, 5CH)



ⓐ Inline dimmer : RDVDIM
Max 75W in a row



ⓑ Round diffuser

HDV6CVRM	HDV12CVRM	HDV18CVRM
6W	12W	18W



ⓓ Square diffuser

HDV6CVSM	HDV12CVSM	HDV18CVSM
6W	12W	18W

